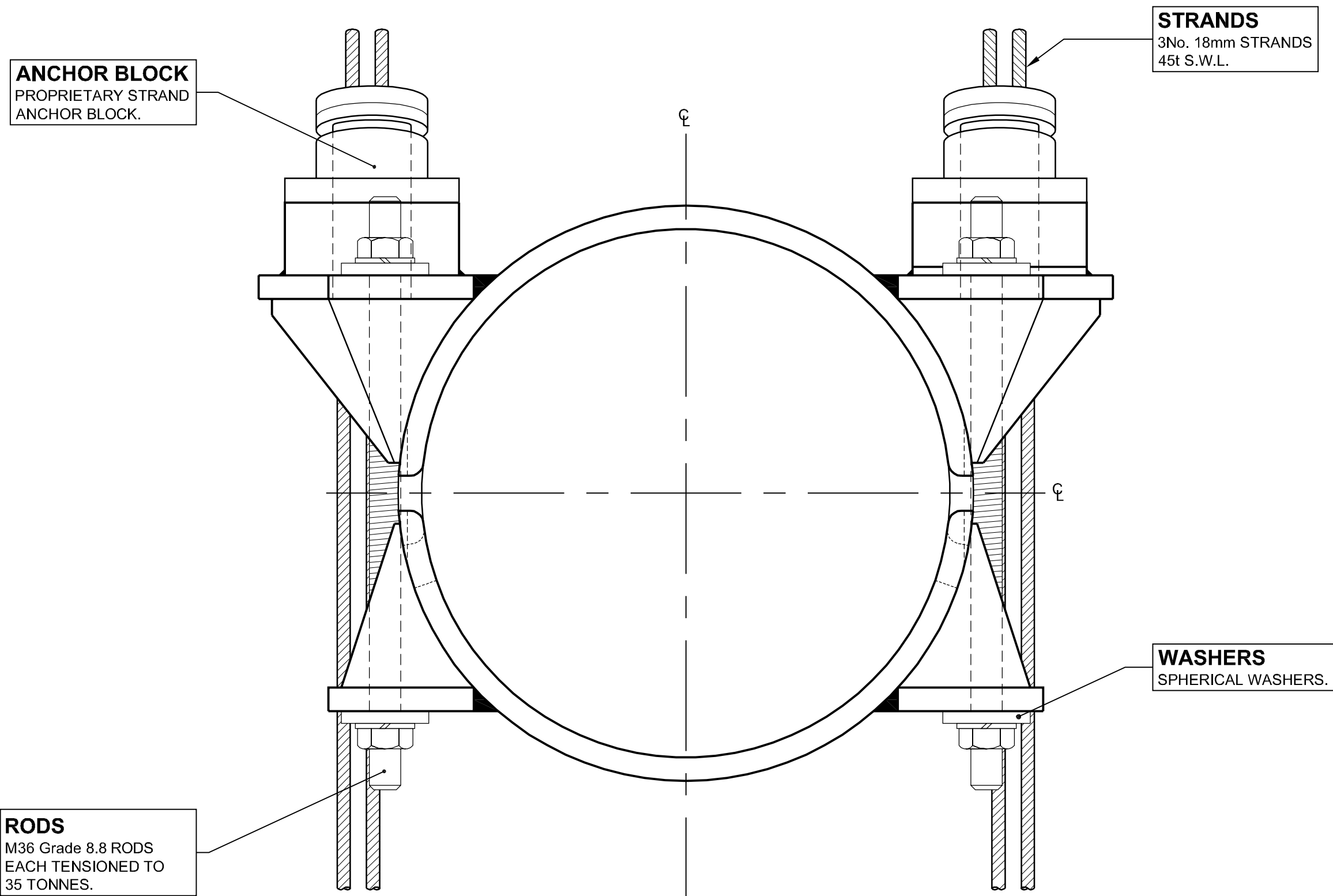


STAGE 1
EAST ELEVATION (LOOKING UPSTREAM)
ON CABLE BAND 54NW
Scale 1:10



SECTION 'X-X'
Scale 1:5

STAGE 1 OUTLINE PROCEDURE

THE FOLLOWING PROCEDURE SHALL BE CARRIED OUT IN THE PRESENCE OF THE PROJECT MANAGERS INSPECTOR.

1. INSTALL TEMPORARY CABLE BAND (See Drawing No. 47484/W/902) ON **LOWER** SIDE OF EXISTING CABLE BAND.
SEE "**TEMPORARY CABLE BAND INSTALLATION NOTES**" 1 to 4, ON THIS DRAWING.
2. ALLOW F.E.T.A. TO REMOVE THE END CAPS AND MEASURE THE LOAD / EXTENSION IN EACH BOLT.
3. USING A PROPRIETARY TORQUE WRENCH AND MULTIPLIER ON THE UNDAMAGED NUT, DE-TENSION THE **LOWER** BOTTOM BOLT IN ¼ OF A TURN INCREMENTS, ALLOWING F.E.T.A. TO MEASURE THE LOAD / EXTENSION IN THE TWO UPPER BOLTS BETWEEN INCREMENTS.
4. CAREFULLY ATTEMPT TO REMOVE THE EXISTING BOLT.
IF THE BOLT PROVES TO BE DIFFICULT TO REMOVE AND IT IS SUSPECTED THAT IT MAY BE DIFFICULT TO INSERT A NEW BOLT, THEN THE **STAGE 2** PROCEDURE WILL BE REQUIRED.

SEE DRAWING No. 47484/W/901 FOR STAGE 2 OUTLINE PROCEDURE.
5. IF THE EXISTING BOLT CAN BE REMOVED RELATIVELY EASILY, REPLACE IT WITH A NEW BOLT AND ALLOW F.E.T.A. TO TENSION THE BOLT TO APPROX. 80 TONNES IN ACCORDANCE WITH THEIR EXISTING TENSIONING PROCEDURE. THE OTHER THREE BOLTS MAY ALSO NEED TO BE TIGHTENED.
6. REMOVE THE TEMPORARY CABLE BAND AND REINSTATE CABLE GUARD WRAPPING AND SEALING MATERIALS.

GENERAL NOTES

1. ALL DIMENSIONS ARE IN MILLIMETRES UNLESS OTHERWISE STATED.
2. DIMENSIONS MUST NOT BE SCALED FROM THIS DRAWING.
3. CHS TO BE S355J2H STEEL TO EN10210-1.
4. ALL STEEL PLATE TO BE S355J2+N TO EN10025-2.
5. PROTECTIVE TREATMENT - ALUMINIUM METAL SPRAY.
6. SEE DRAWING No. 47484/W/901 FOR STAGE 2 OUTLINE PROCEDURE.
7. SEE DRAWING No. 47484/W/902 FOR STEELWORK DETAILS.

TEMPORARY CABLE BAND INSTALLATION NOTES

1. REMOVE CABLE GUARD WRAPPING AND INSTALL TEMPORARY BANDS ON TOP OF WIRE WRAPPING.
2. EACH TEMPORARY BAND WILL WEIGH APPROX. 600Kg.
3. THE TEMPORARY CABLE BAND THREADED RODS SHALL BE CAREFULLY TENSIONED TO AN APPROVED SEQUENCE, IN ORDER TO MAINTAIN EVEN AND EQUAL GAPS BETWEEN TWO HALVES.
4. THE TIGHTENING OF THE TEMPORARY CABLE BAND THREADED RODS AND REMOVAL OF THE DAMAGED BOLT SHALL BE CARRIED OUT IN THE PRESENCE OF THE PROJECT MANAGER'S INSPECTOR.

C	13/11/09	ISSUED AS "AS - BUILT"		MPS	MJB	CPEC			
B	04/02/2008	NOTES ADDED / AMENDED.		MPS	MJB	CPEC			
A	10/12/2007	MISCELLANEOUS MODIFICATIONS.		MPS	MJB	CPEC			
Rev	Date	Detail	Make	Chk'd	App'd				

Status :

AS BUILT

Client :



Project : **FORTH ROAD BRIDGE
MAIN CABLE
DEHUMIDIFICATION SYSTEM**

Title : **ADDITIONAL WORKS
REPLACEMENT OF
CABLE BAND BOLT AT
PANEL POINT 54NW**

Eng :	MJB	CAD :	MPS
Chk'd :	MJB	App'd :	CPEC
Date :	DECEMBER 2007	Scale :	AS SHOWN



5th Floor
2 City Walk,
LEEDS, LS11 9AR

Tel: +44 (0) 113 391 6800
Fax: +44 (0) 113 391 6899
www.aecom.com

No. 47484/W/900

Rev:
C

A1