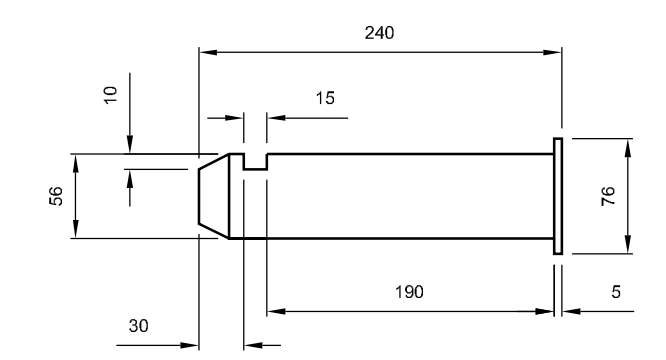
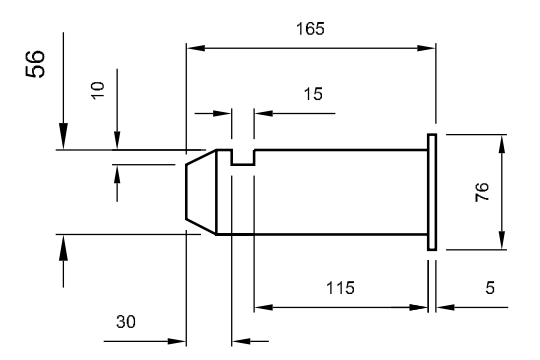


KEY	
1	LINK PLATE - 500mm LONG x 130mm WIDE x 20mm THK
2	LINK PLATE - 400mm LONG x 130mm WIDE x 30mm THK
3	KEEPER PLATE - 100mm x 50mm x 10mm THK. C/W 12Ø HOLES FOR M10 BOLTS.
4	UPPER PIN (SEE DETAIL BELOW)
5	LOWER PIN (SEE DETAIL BELOW)
6	CHEEK PLATE - 150mm Ø x 15mm THK.
7	NUT, LOCK NUT AND SPHERICAL WASHER

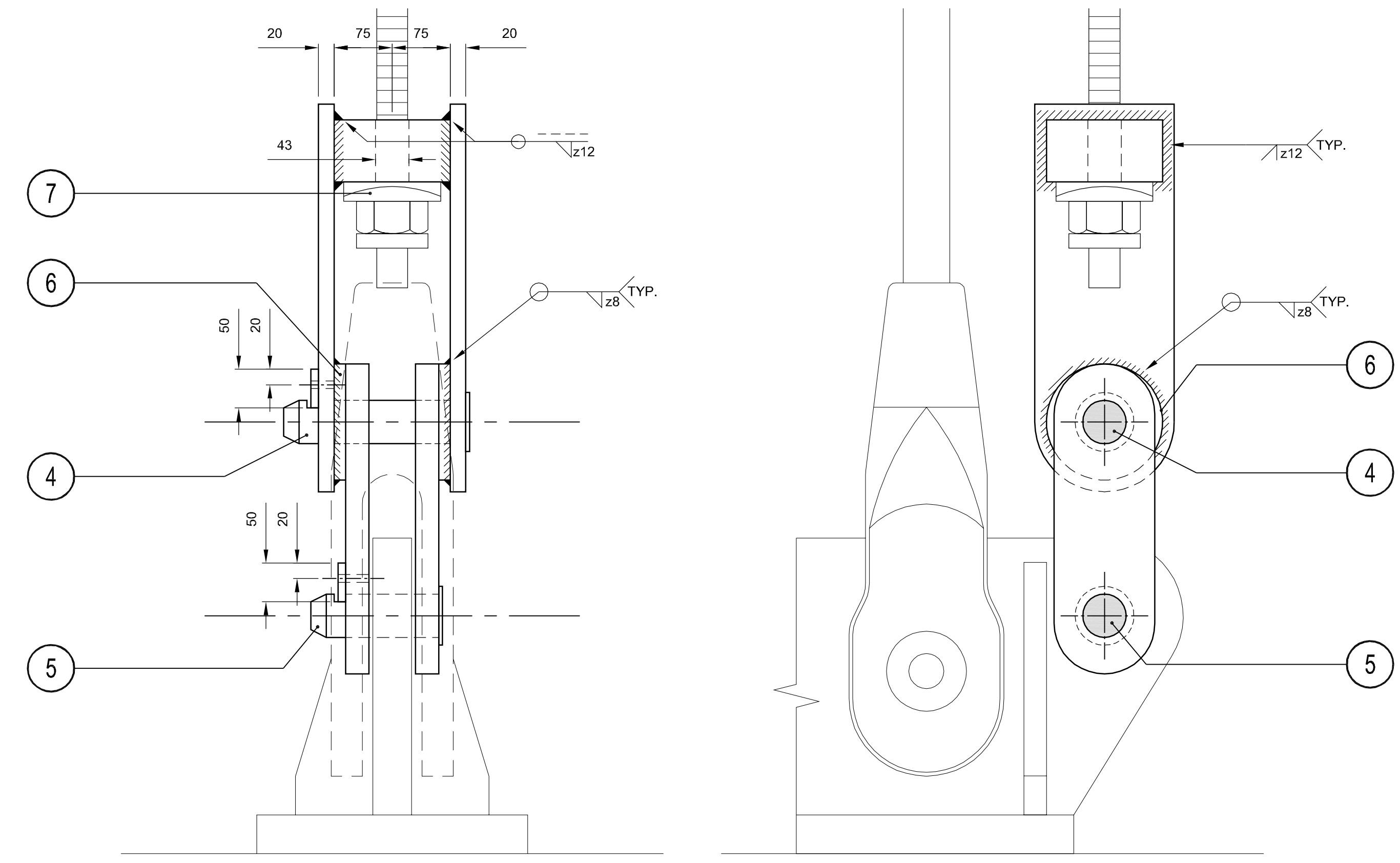


UPPER PIN
Scale 1:5

PINS
56Ø (+0.5, -0) PIN.
MATERIAL (EN24) 817M40 Grade V.
EXISTING HOLES IN SUSPENDER
BRACKET TO BE REAMED OUT
TO 57mm Ø (+0.5, -0).



LOWER PIN
Scale 1:5



GENERAL NOTES

1. ALL DIMENSIONS ARE IN MILLIMETRES
UNLESS OTHERWISE STATED.

2. DIMENSIONS MUST NOT BE SCALED FROM
THIS DRAWING.

AS BUILT

Client :

Forth Estuary Transport Authority

Project :
**FORTH ROAD BRIDGE
MAIN CABLE
DEHUMIDIFICATION SYSTEM**

Title :
**ADDITIONAL WORKS
REPLACEMENT OF
CABLE BAND BOLT AT
PANEL POINT 54NW
Sheet 2 of 2**

Eng : MJB CAD : MPS
Chk'd : MJB App'd : CPEC
Date : DECEMBER 2007 Scale : AS SHOWN

5th Floor
2 City Walk,
LEEDS, LS11 9AR
Tel: +44 (0) 113 391 6800
Fax: +44 (0) 113 391 6899
www.aecom.com

No. 47484/W/903 Rev. B

A1