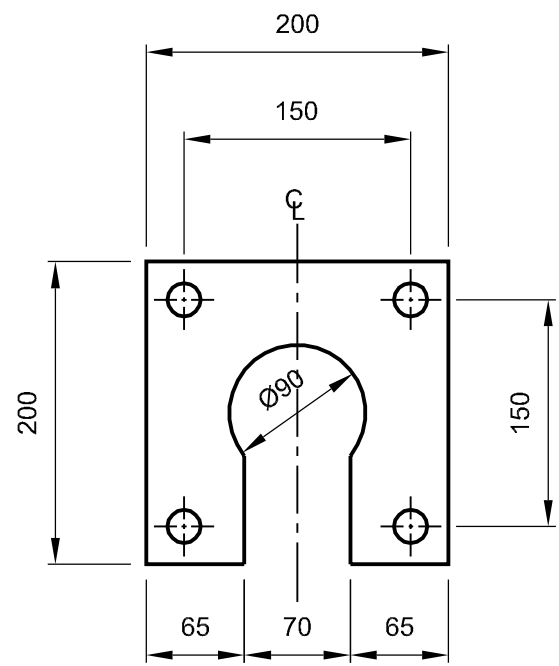
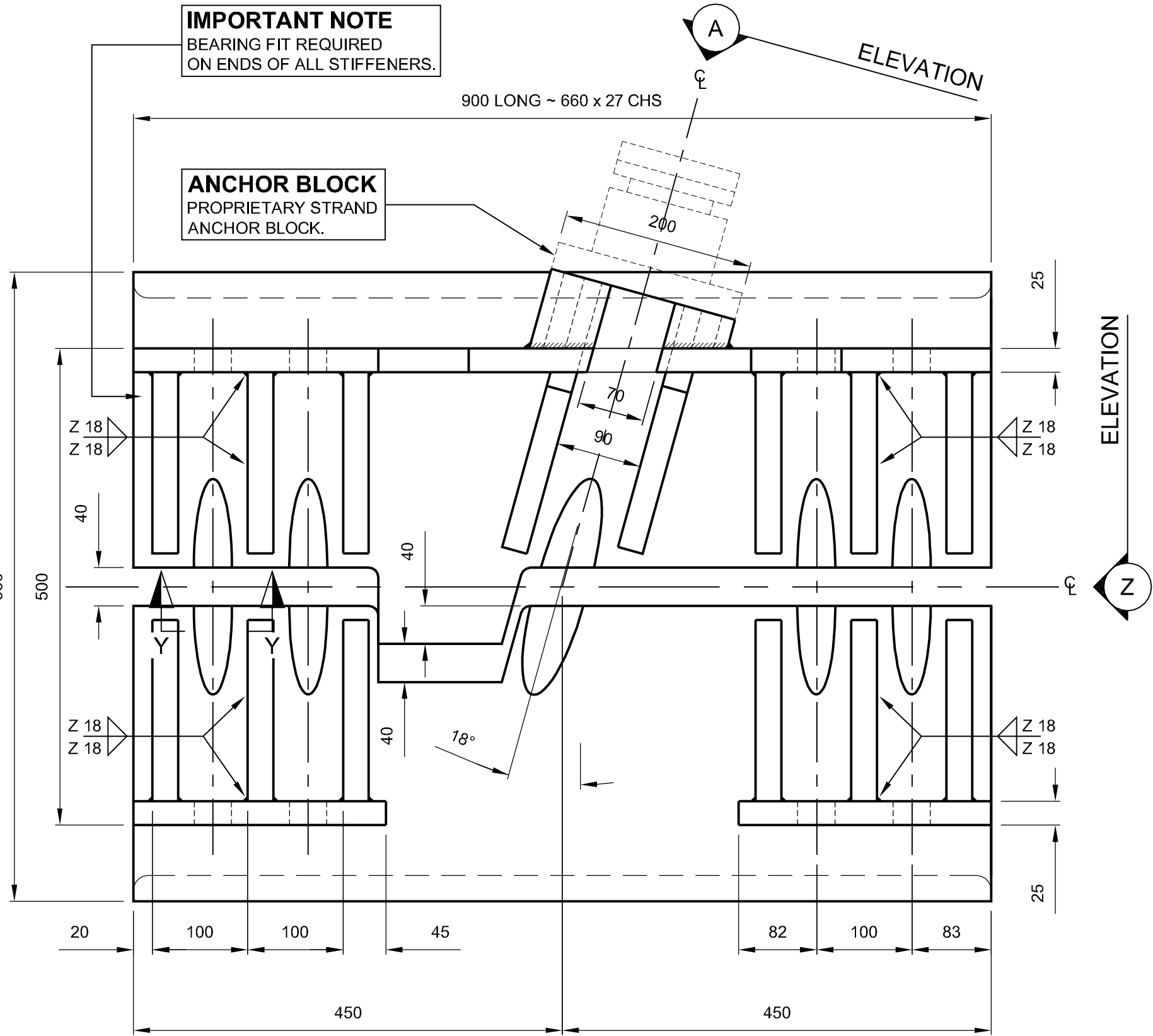


TEMPORARY CABLE BAND  
ELEVATION 'Z'  
Scale 1:5



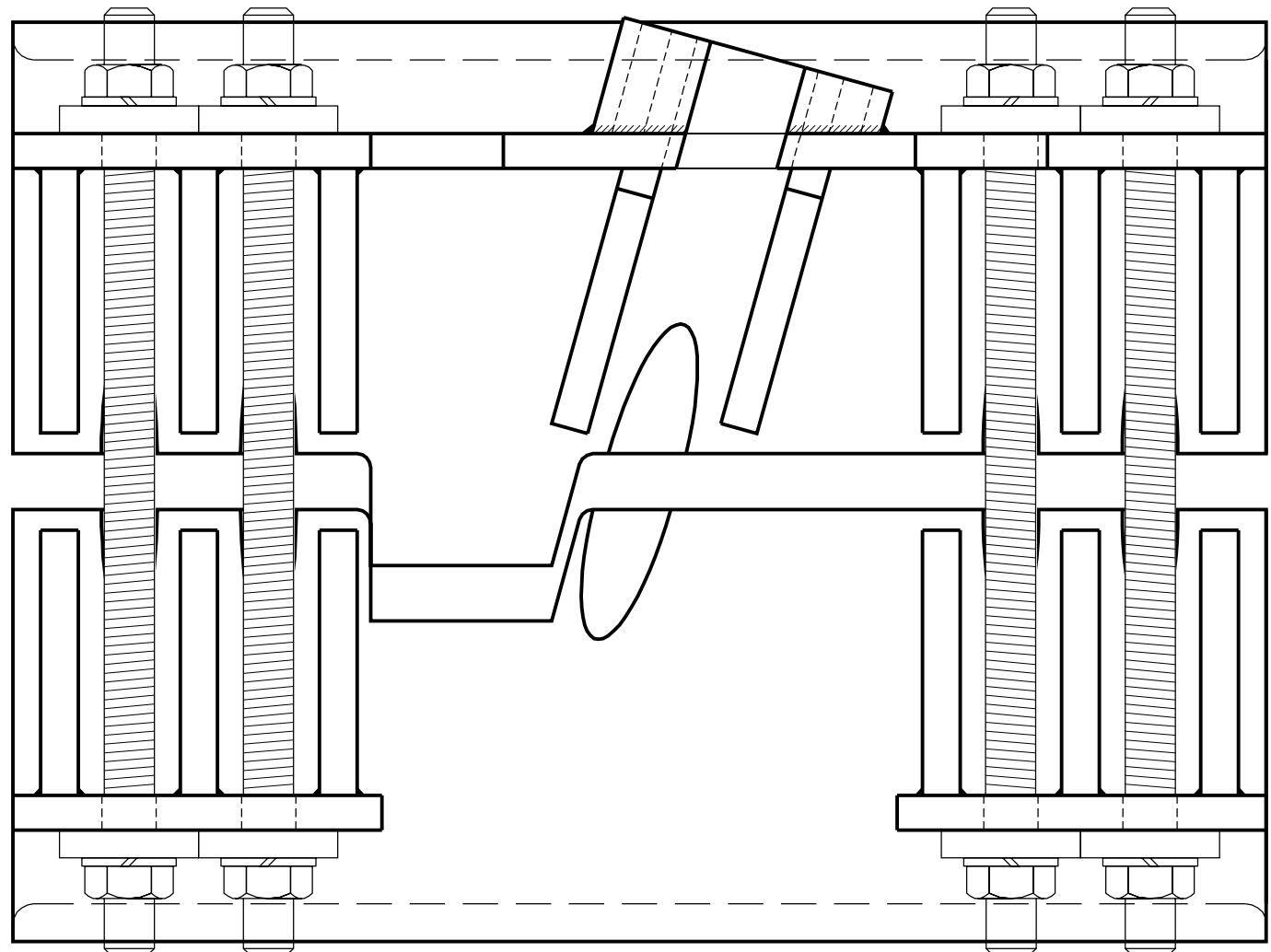
ELEVATION 'A'  
Scale 1:5



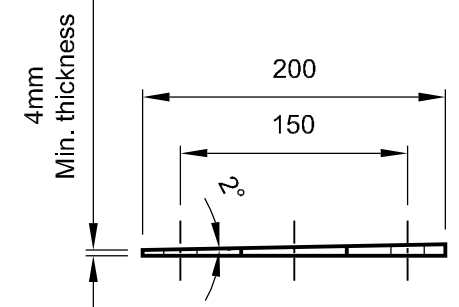
TEMPORARY CABLE BAND  
FRONT ELEVATION  
Scale 1:5

**TEMPORARY CABLE BAND  
2No. REQUIRED AS SHOWN**

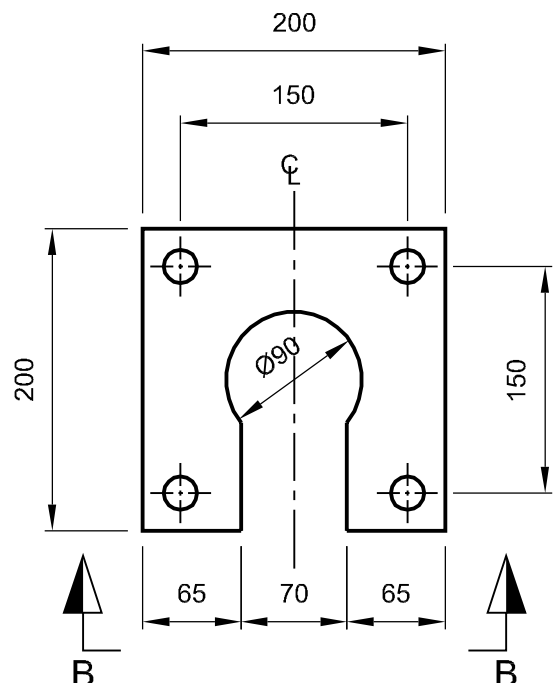
16No. M36 Grade 8.8 THREADED RODS  
REQUIRED ~ 680mm LONG, ZINC PLATED  
c/w 2 NUTS AND SPHERICAL WASHERS  
PER ROD.



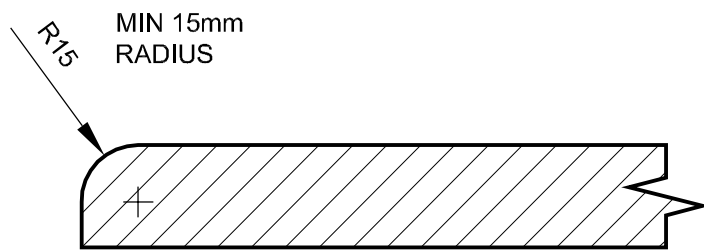
TEMPORARY CABLE BAND ELEVATION  
SHOWING LOCATION OF 680mm LONG RODS  
Scale 1:5



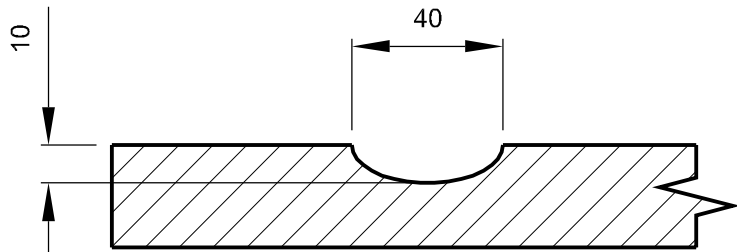
SECTION 'B - B'  
Scale 1:5



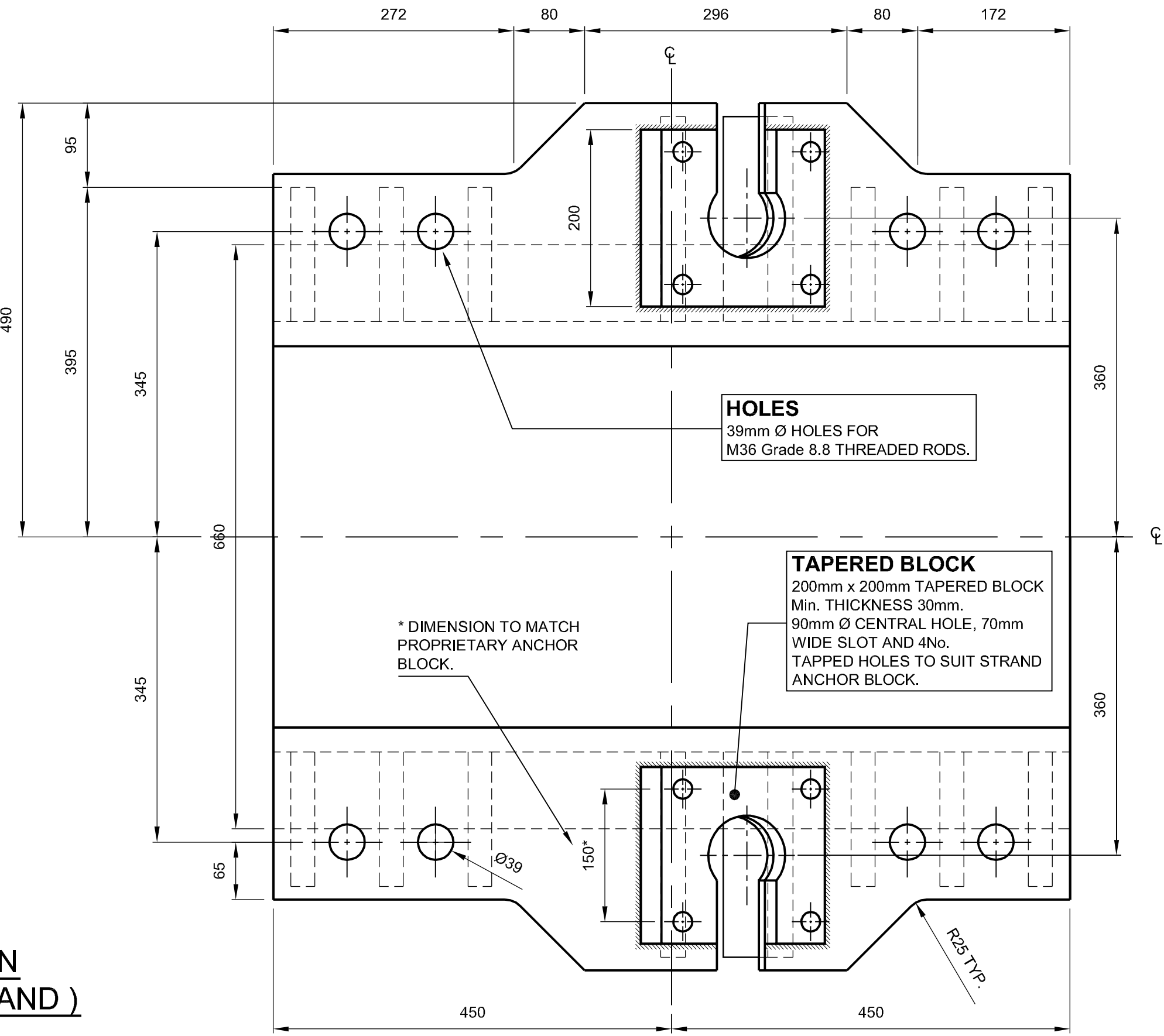
1° TAPERED SHIMS  
2No. REQUIRED AS SHOWN  
(2No. REQUIRED OPPOSITE HAND)  
Scale 1:5



SECTION 'X - X'  
Scale 1:2



SECTION 'Y - Y'  
Scale 1:2



TEMPORARY CABLE BAND  
PLAN  
Scale 1:5

GENERAL NOTES

1. ALL DIMENSIONS ARE IN MILLIMETRES UNLESS OTHERWISE STATED.
2. DIMENSIONS MUST NOT BE SCALED FROM THIS DRAWING.
3. CHS TO BE S355J2H STEEL TO EN10210-1.
4. ALL STEEL PLATE TO BE S355J2+N TO EN10025-2.
5. PROTECTIVE TREATMENT - ALUMINIUM METAL SPRAY WITH SEALER APPLIED TO OUTER SURFACES ONLY.
6. SEE DRAWING No. 47484/W/905 FOR REPLACEMENT OF CABLE BAND BOLT DETAIL.

A	151100	ISSUED AS "AS - BUILT"	MPS	MJB	CPEC
Rev	Date	Detail	Made	Chk'd	App'd

Status :

AS BUILT

Client :  
Forth Estuary Transport Authority

Project :  
**FORTH ROAD BRIDGE  
MAIN CABLE  
DEHUMIDIFICATION SYSTEM**

Title :  
**ADDITIONAL WORKS  
TEMPORARY  
CABLE BAND  
STEELWORK DETAILS**

Eng :	MJB	CAD :	MPS
Chk'd :	SB	App'd :	CPEC
Date :	JUNE 2008	Scale :	AS SHOWN

**AECOM**  
5th Floor  
2 City Walk,  
LEEDS, LS11 9AR  
Tel: +44 (0) 113 391 6800  
Fax: +44 (0) 113 391 6899  
www.aecom.com

No. 47484/W/907

Rev:  
A

A1