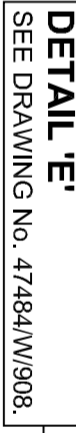
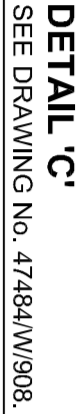


NOTE
MAX 1.5° INCLINE ON STRANDS.



THE FOLLOWING PROCEDURE SHALL BE CARRIED OUT IN THE PRESENCE OF THE PROJECT MANAGERS INSPECTOR.

- ## GENERAL NOTES
1. ALL DIMENSIONS ARE IN MILLIMETRES UNLESS OTHERWISE STATED.
 2. DIMENSIONS MUST NOT BE SCALED FROM THIS DRAWING.
 3. CHS TO BE S355J2H STEEL TO EN10210-1, EN10252.
 4. ALL STEEL PLATE TO BE S355J2+H TO EN10252.
 5. PROTECTIVE TREATMENT - ALUMINIUM METAL SPRAY FOR TEMPORARY CABLE BANDS OR 2 COATS OF PRIMER ON ADJUSTABLE HANGERS.
 6. SEE DRAWING No. 47484/W/907 FOR STEELWORK DETAILS.
- ## TEMPORARY CABLE BAND INSTALLATION NOTES
1. REMOVE CABLE GUARD WRAPPING AND INSTALL TEMPORARY BANDS ON TOP OF WIRE WRAPPING.
 2. EACH TEMPORARY BAND WILL WEIGH APPROX. 600gms.
 3. THE TEMPORARY CABLE BAND THREADED ROOS SHALL BE CAREFULLY TENSIONED TO AN APPROVED SEQUENCE, IN ORDER TO MAINTAIN EVEN AND EQUAL GAPS BETWEEN TWO HALVES.
 4. THE TIGHTENING OF THE TEMPORARY CABLE BAND THREADED ROOS AND REMOVAL OF THE DAMAGED BOLT SHALL BE CARRIED OUT IN THE PRESENCE OF THE PROJECT MANAGER'S INSPECTOR.

1. ALL DIMENSIONS ARE IN MILLIMETRES
UNLESS OTHERWISE STATED.

2. DIMENSIONS MUST NOT BE SCALED FROM THIS DRAWING.
 3. CHS TO BE S355L2H STEEL TO EN10210-1, 1-11.
 4. ALL STEEL PLATE TO BE S355L24H TO EN10025-2.
 5. PROTECTIVE TREATMENT - ALUMINIUM METAL SPRAY FOR TEMPORARY BANDS OR 2 COATS OF PRIMER ON ADJUSTABLE HANGERS.
 6. SEE DRAWING No. 47484W/907 FOR STEELWORK DETAILS.
- ### TEMPORARY CABLE BAND INSTALLATION NOTES
1. REMOVE CABLE GUARD WRAPPING AND INSTALL TEMPORARY BANDS ON TOP OF WIRE WRAPPING.
 2. EACH TEMPORARY BAND WILL WEIGH APPROX. 600kg.
 3. THE TEMPORARY CABLE BAND THREADED ROOS SHALL BE CAREFULLY TENSIONED TO AN APPROVED SEQUENCE, IN ORDER TO MAINTAIN EQUAL OR EQUAL GAPS BETWEEN TWO HANGERS.
 4. THE TIGHTENING OF THE TEMPORARY CABLE BAND THREADED ROOS AND REMOVAL OF THE DAMAGED BOLT SHALL BE CARRIED OUT IN THE PRESENCE OF THE PROJECT MANAGER'S INSPECTOR.

INSTALLATION NOTES

INSTALLATION NOTES

1. REMOVE CABLE GLAND WRAPPING AND INSTALL TEMPORARY BANDS ON TOP OF WIRE WRAPPING.
2. EACH TEMPORARY BAND WILL WEIGH APPROX. 600kg.
3. THE TEMPORARY CABLE BAND THREADED ROOS SHALL BE CAREFULLY TENSIONED TO AN APPROVED SEQUENCE, IN ORDER TO MAINTAIN EVEN AND EQUAL GAPS BETWEEN TWO HALVES.
4. THE TIGHTENING OF THE TEMPORARY CABLE BAND THREADED ROOS AND REMOVAL OF THE DAMAGED BOLT SHALL BE CARRIED OUT IN THE PRESENCE OF THE PROJECT MANAGER'S INSPECTOR.

Proj	Date	Docum
Status:		

Client: _____

Forth Estuary Transport Authority

MAIN CABLE

DEHUMIDIFICATION SYSTEM

PANEL POINT 42SW

Date: JUNE 2008	Scale: 1 : 10
-----------------	---------------



No. 47484/W/911