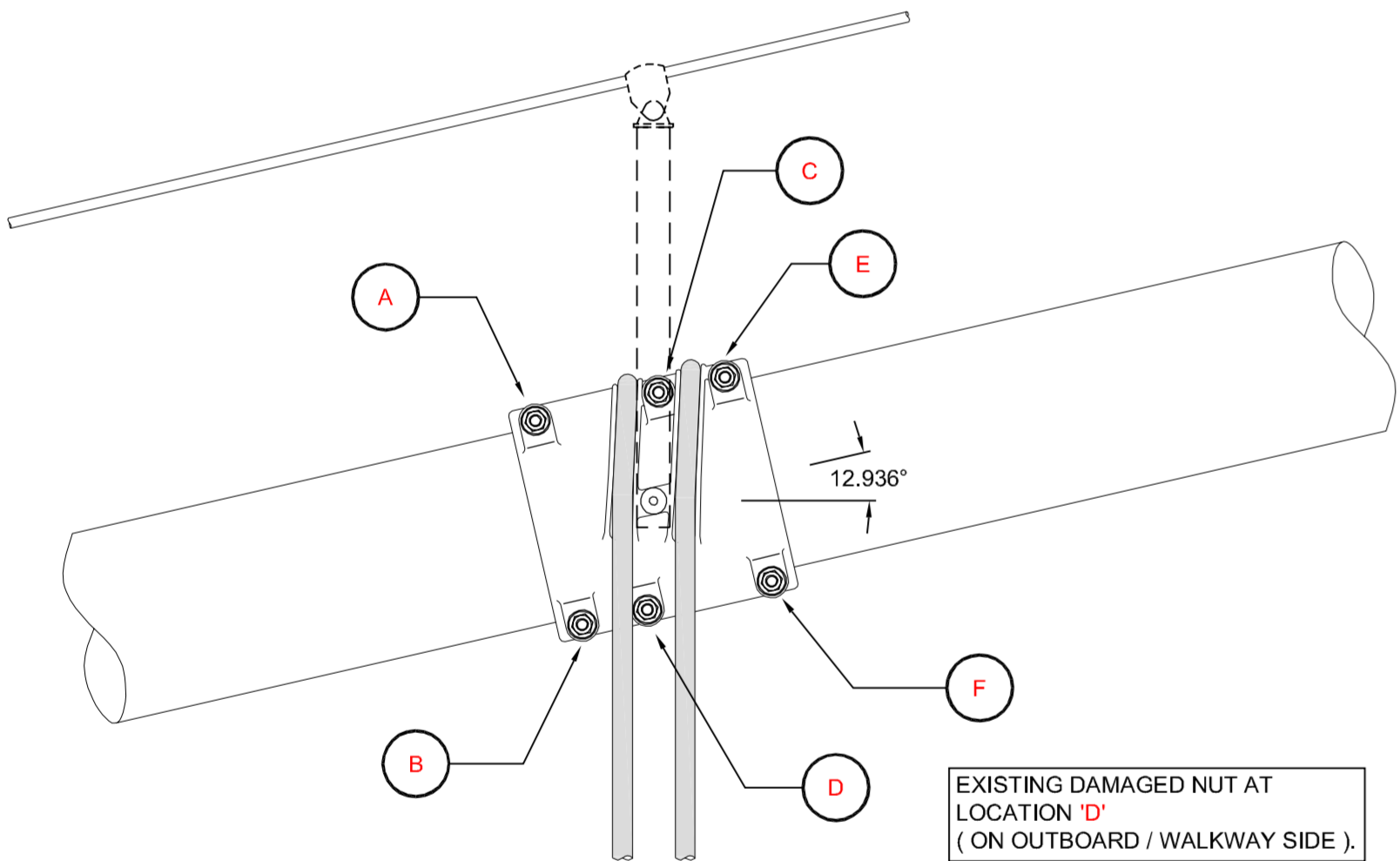


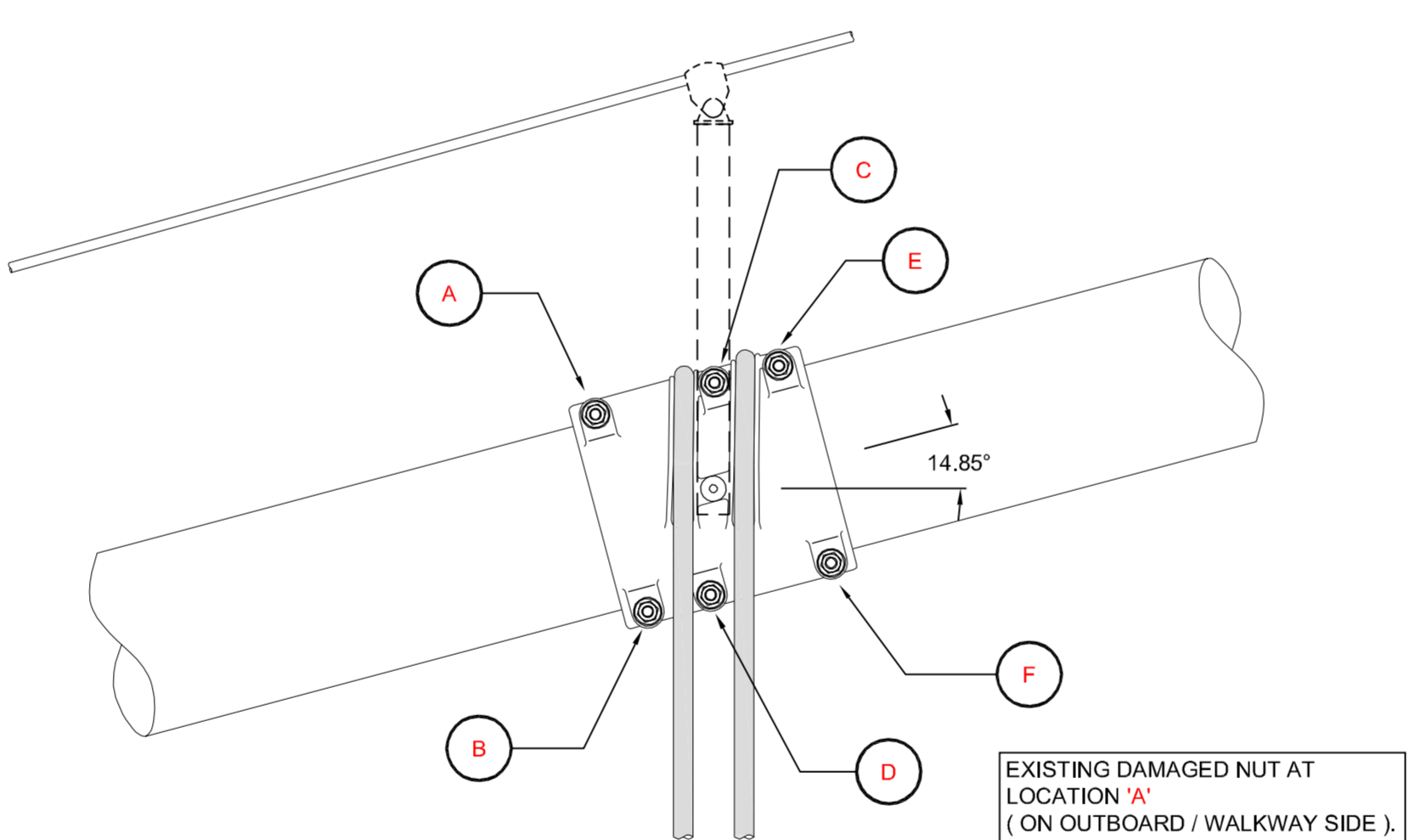
PART NORTH EAST ELEVATION SHOWING CABLE BAND LOCATIONS

Scale 1:2000



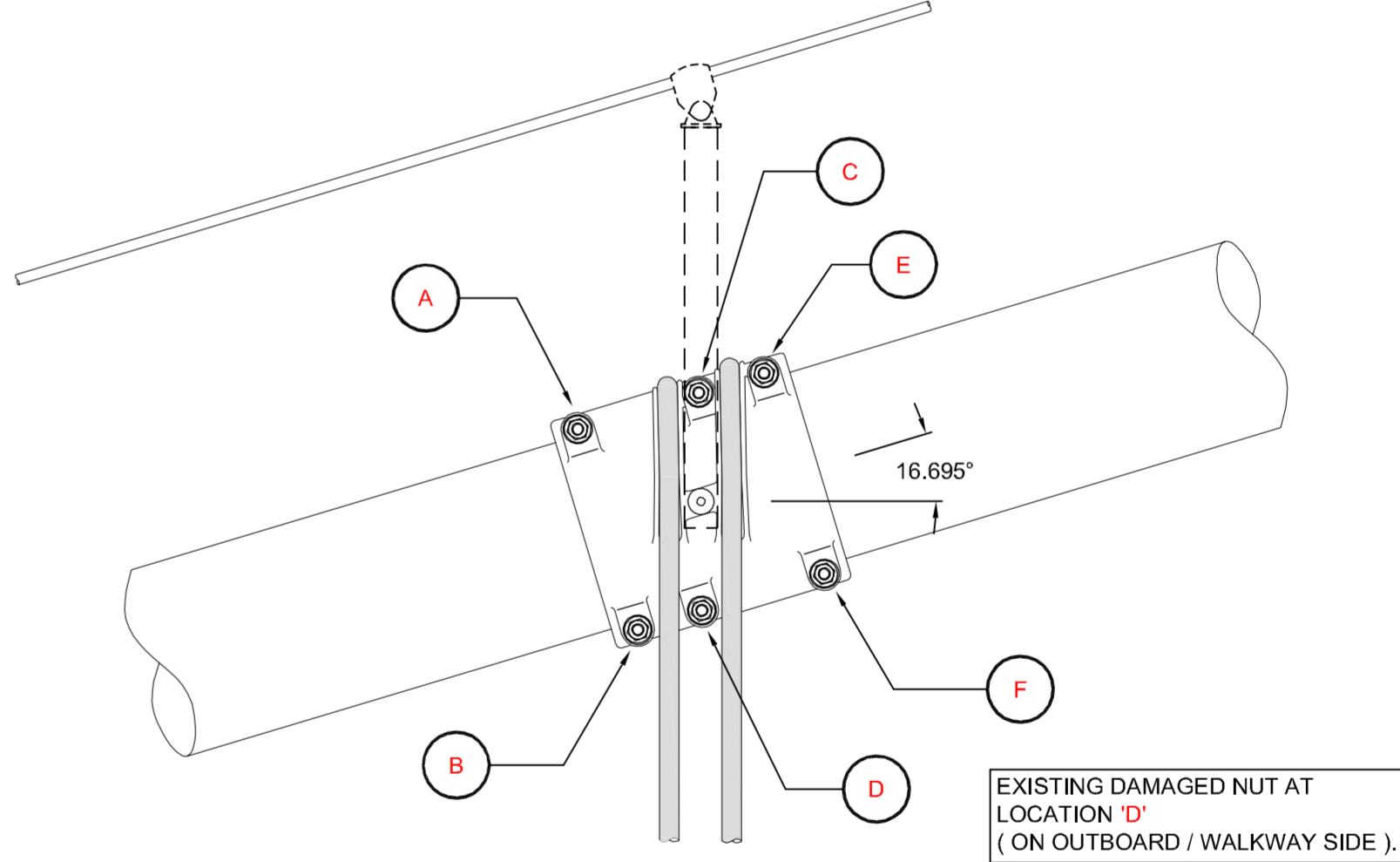
ELEVATION ON CABLE BAND 18

Scale 1:20



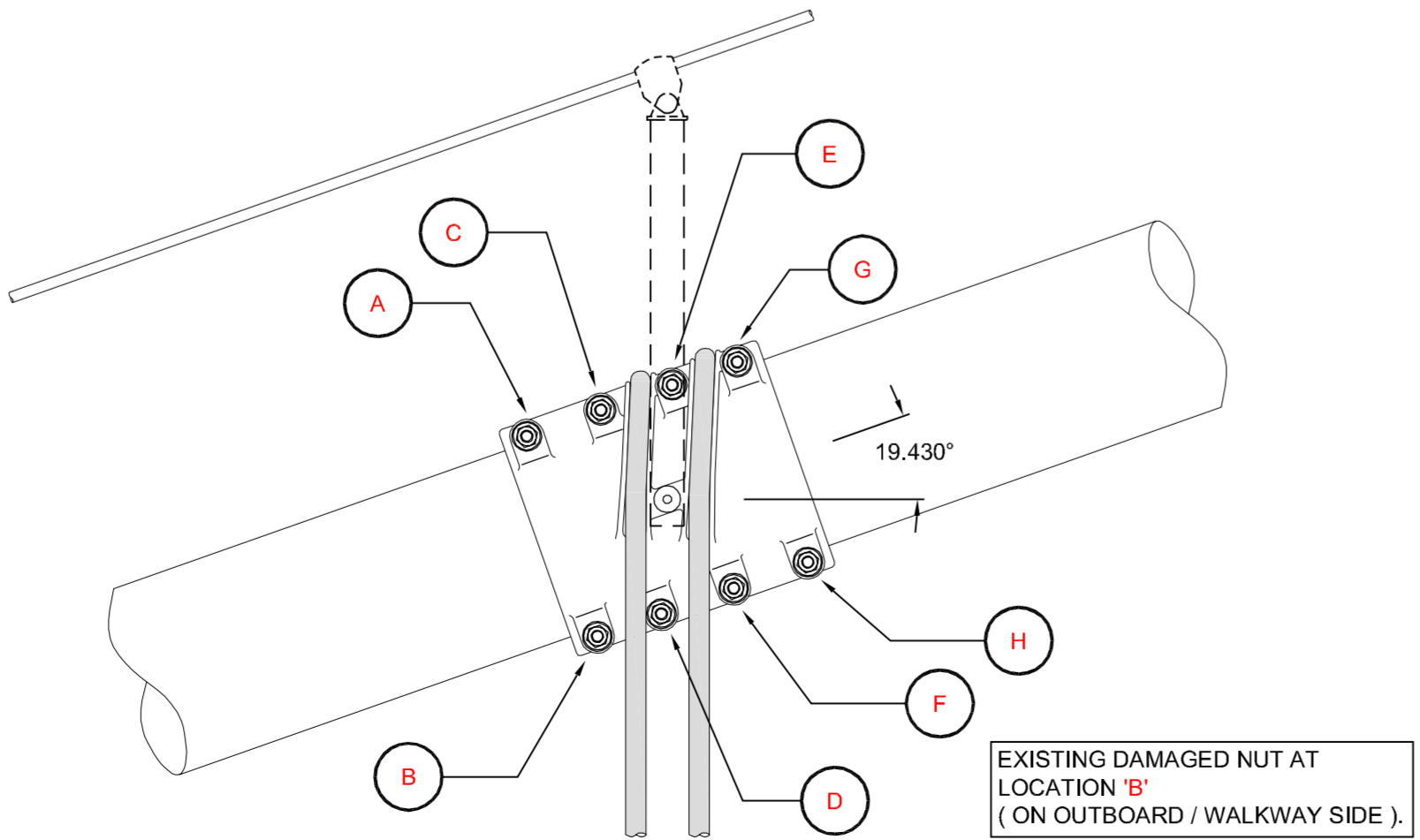
ELEVATION ON CABLE BAND 22

Scale 1:20



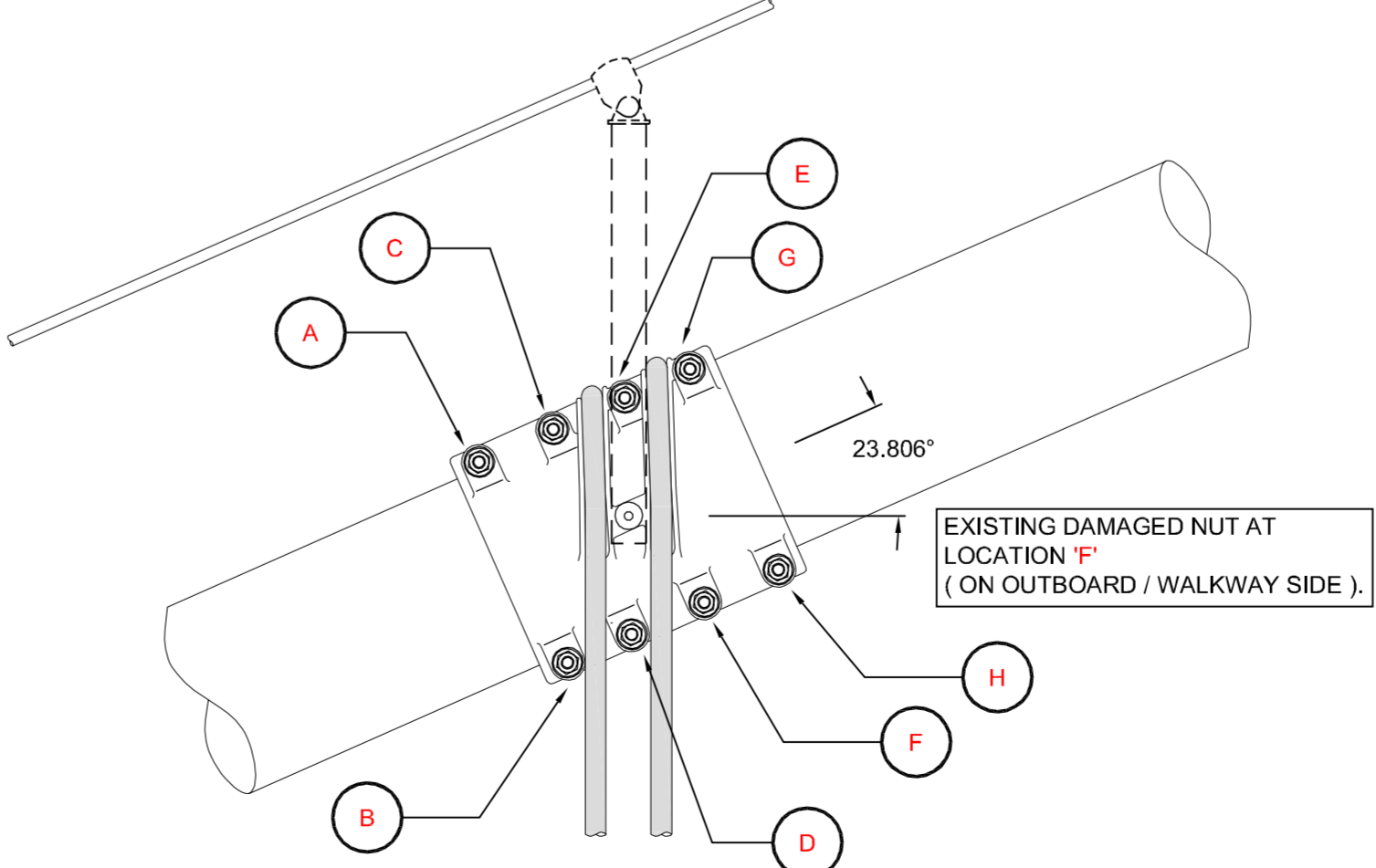
ELEVATION ON CABLE BAND 26

Scale 1:20



ELEVATION ON CABLE BAND 32

Scale 1:20



ELEVATION ON CABLE BAND 42

Scale 1:20

GENERAL NOTES

1. ALL DIMENSIONS ARE IN MILLIMETRES UNLESS OTHERWISE STATED.
2. DIMENSIONS MUST NOT BE SCALED FROM THIS DRAWING.

EXISTING STRUCTURE NOTES

1. THE ACOUSTIC MONITORING SYSTEM COMPONENTS SHALL NOT BE REMOVED OR OTHERWISE DAMAGED OR DISTURBED DURING MAIN CABLE DEHUMIDIFICATION WORKS.

KEY

- LOCATION OF CABLE BANDS WHERE A DAMAGED NUT IS LOCATED.

STAGE 1 DRAWINGS

REFER TO THE FOLLOWING DRAWING No.'s FOR STAGE 1 PROCEDURES.

47484/W/921  
47484/W/922

Rev	Date	Detail	Made	Chk'd	App'd
C	13/11/09	ISSUED AS "AS - BUILT"	MPS	MJB	CPEC
B	24/03/2009	CONSTRUCTION ISSUE	MPS	MJB	CPEC
A	11/02/2009	INITIAL ISSUE	MPS	MJB	CPEC

Status :

AS BUILT

Client :



Project :

**FORTH ROAD BRIDGE  
MAIN CABLE  
DEHUMIDIFICATION SYSTEM**

Title :

**ADDITIONAL WORKS  
REPLACEMENT OF CABLE  
CABLE BAND BOLTS  
NORTH EAST SIDE SPAN LOCATIONS**

Eng : MJB	CAD : MPS
Chk'd : MJB	App'd : CPEC
Date : FEBRUARY 2009	Scale : AS SHOWN



No. 47484/W/920

Rev:  
C

A1