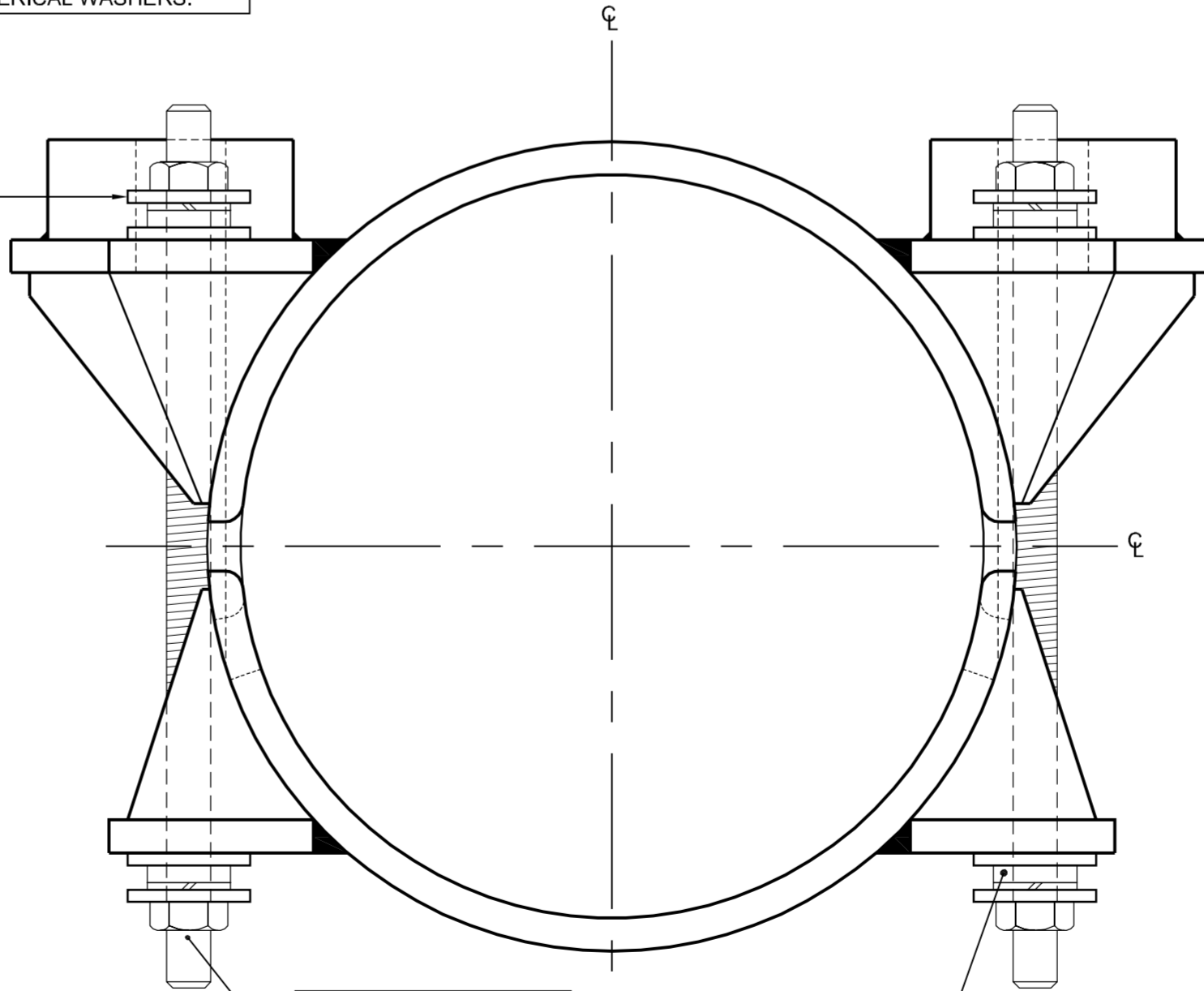


WASHER PLATES
200mm x 100mm x 10mm
WASHER PLATE INSTALLED
ABOVE AND BELOW
SPHERICAL WASHERS.



SECTION 'X - X'
Scale 1:5

STAGE 1 OUTLINE PROCEDURE

TASKS 1 AND 7 OF THE FOLLOWING PROCEDURE SHALL BE CARRIED OUT BY **C.S.L.** IN THE PRESENCE OF THE PROJECT MANAGERS INSPECTOR.

TASKS 2 TO 6 SHALL BE CARRIED OUT BY **F.E.T.A.**

- C.S.L. SHALL INSTALL A TEMPORARY CABLE BAND TYPE 3 (See Drawing No. 47484/W/923) ON LOWER SIDE OF EXISTING CABLE BAND IN ACCORDANCE WITH C.S.L. METHOD STATEMENT No.33. THE CABLE GUARD WRAPPING SHALL BE REMOVED (IF INSTALLED) AND THE TEMPORARY CABLE BAND INSTALLED ON TOP OF THE WIRE WRAPPING WITH THE M36 RODS 'SPANNER TIGHT'. NOTE THAT EACH TEMPORARY CABLE BAND WEIGHS APPROX. 600kg.
- THE TEMPORARY CABLE BAND THREADED RODS SHALL BE CAREFULLY TENSIONED BY F.E.T.A. TO AN APPROVED SEQUENCE IN ORDER TO MAINTAIN EVEN AND EQUAL GAPS BETWEEN TWO HALVES.
- F.E.T.A. OPERATIVES SHALL REMOVE ALL END CAPS, EXCEPT THE ONE ON THE DAMAGED NUT, AND MEASURE THE LOAD / EXTENSION IN EACH BOLT. USING A PROPRIETARY TORQUE WRENCH AND MULTIPLIER ON THE UNDAMAGED NUT, DE-TENSION THE BOLT WITH THE DAMAGED NUT IN 1/4 TURN INCREMENTS. MEASURING THE LOAD / EXTENSION IN THE REMAINING BOLTS BETWEEN INCREMENTS.
- CAREFULLY ATTEMPT TO REMOVE THE DETENSIONED BOLT. IF THE BOLT PROVES TO BE DIFFICULT TO REMOVE AND IT IS SUSPECTED THAT IT MAY BE DIFFICULT TO INSERT A NEW BOLT, THEN THE STAGE 2 PROCEDURE WILL BE REQUIRED.

SEE DRAWING No. 47484/W/925 & 926 FOR STAGE 2 OUTLINE PROCEDURE.

- IF THE EXISTING BOLT CAN BE REMOVED RELATIVELY EASILY, REPLACE IT WITH A NEW BOLT AND TENSION TO APPROX. 80 TONNES IN ACCORDANCE WITH EXISTING F.E.T.A. TENSIONING PROCEDURE. THE REMAINING BOLTS MAY ALSO NEED TO BE TIGHTENED.
- WHEN THE PERMANENT CABLE BAND BOLTS HAVE BEEN FULLY TENSIONED, THE TEMPORARY CABLE BAND THREADED RODS SHALL BE CAREFULLY DE-TENSIONED BY F.E.T.A.
- C.S.L. SHALL REMOVE THE TEMPORARY CABLE BAND AND REINSTATE CABLE GUARD WRAPPING AND SEALING MATERIALS.

GENERAL NOTES

- ALL DIMENSIONS ARE IN MILLIMETRES UNLESS OTHERWISE STATED.
- DIMENSIONS MUST NOT BE SCALED FROM THIS DRAWING.
- SEE DRAWING No. 47484/W/923 FOR TEMPORARY CABLE BAND STEELWORK DETAILS.

D	11/11/09	ISSUED AS "AS - BUILT"	MPS	MJB	CPEC
C	12/05/2009	WASHER PLATES ADDED TO TEMPORARY CABLE BANDS.	MPS	MJB	CPEC
B	26/03/2009	CONSTRUCTION ISSUE	MPS	MJB	CPEC
A	11/02/2009	INITIAL ISSUE	MPS	MJB	CPEC

Status :

AS BUILT

Client :



Project : **FORTH ROAD BRIDGE
MAIN CABLE
DEHUMIDIFICATION SYSTEM**

Title : **ADDITIONAL WORKS
REPLACEMENT OF CABLE BAND
BOLTS AT PP 18NE AND 22NE
NORTH EAST SIDE SPAN LOCATIONS**

Eng :	MJB	CAD :	MPS
Chk'd :	MJB	App'd :	CPEC
Date :	FEBRUARY 2009	Scale :	AS SHOWN



5th Floor
2 City Walk,
LEEDS, LS11 9AR

Tel: +44 (0) 113 391 6800
Fax: +44 (0) 113 391 6899
www.aecom.com

No. 47484/W/921

Rev:
D