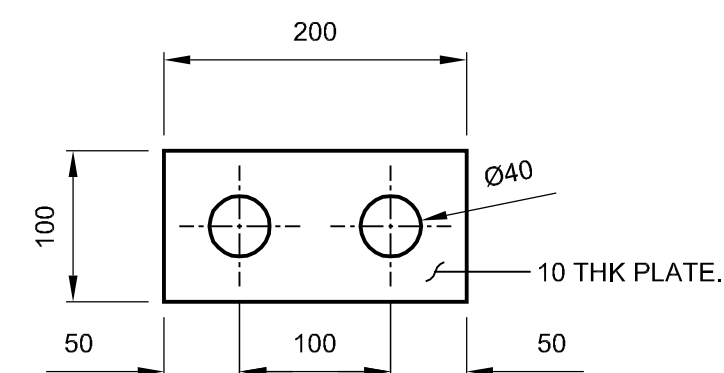


TEMPORARY CABLE BAND
ELEVATION 'B'
Scale 1:5

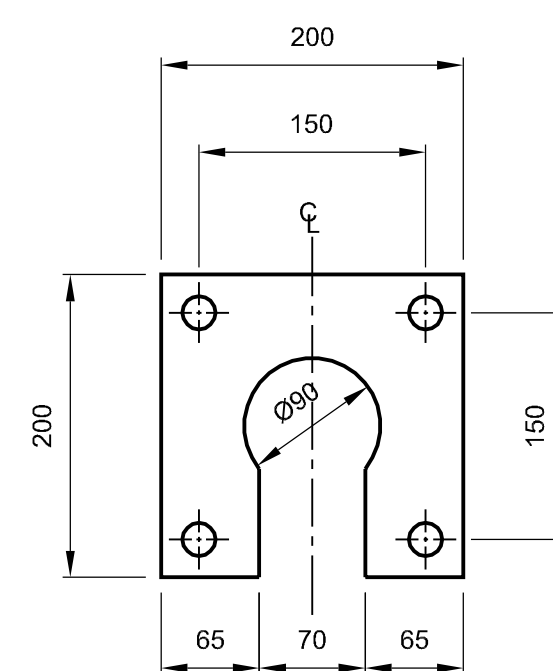


WASHER PLATE DETAIL
16No. REQUIRED AS SHOWN
(TO BE INSTALLED ABOVE AND
BELOW SPHERICAL WASHERS)

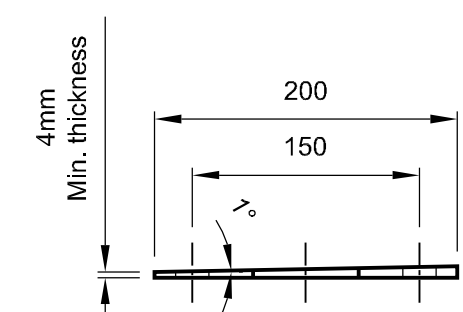
Scale 1:5

TEMP CABLE BLOCK ANGLE		
BAND TYPE	ANGLE (X°)	STAGE 1 No. REQUIRED
1	22°	2
2	SEE DRAWING No. 47484/W/902	
3	15°	2

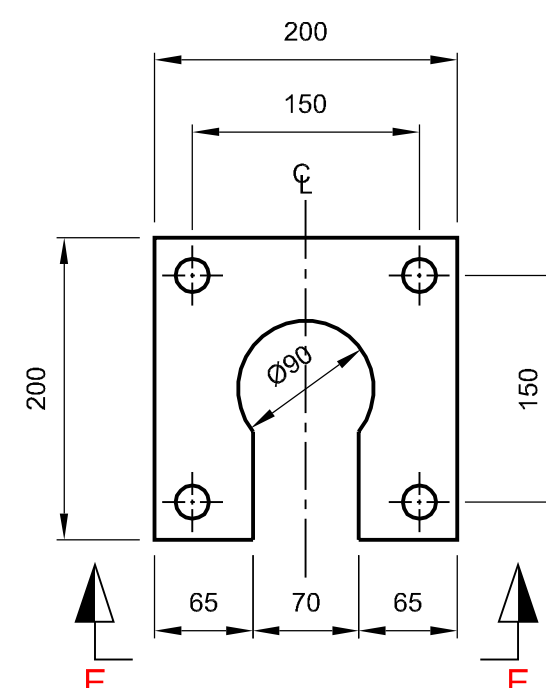
32No. M36 Grade 8.8 THREADED RODS
REQUIRED ~ 680mm LONG, ZINC PLATED
c/w 2 NUTS AND SPHERICAL WASHERS
PER ROD.



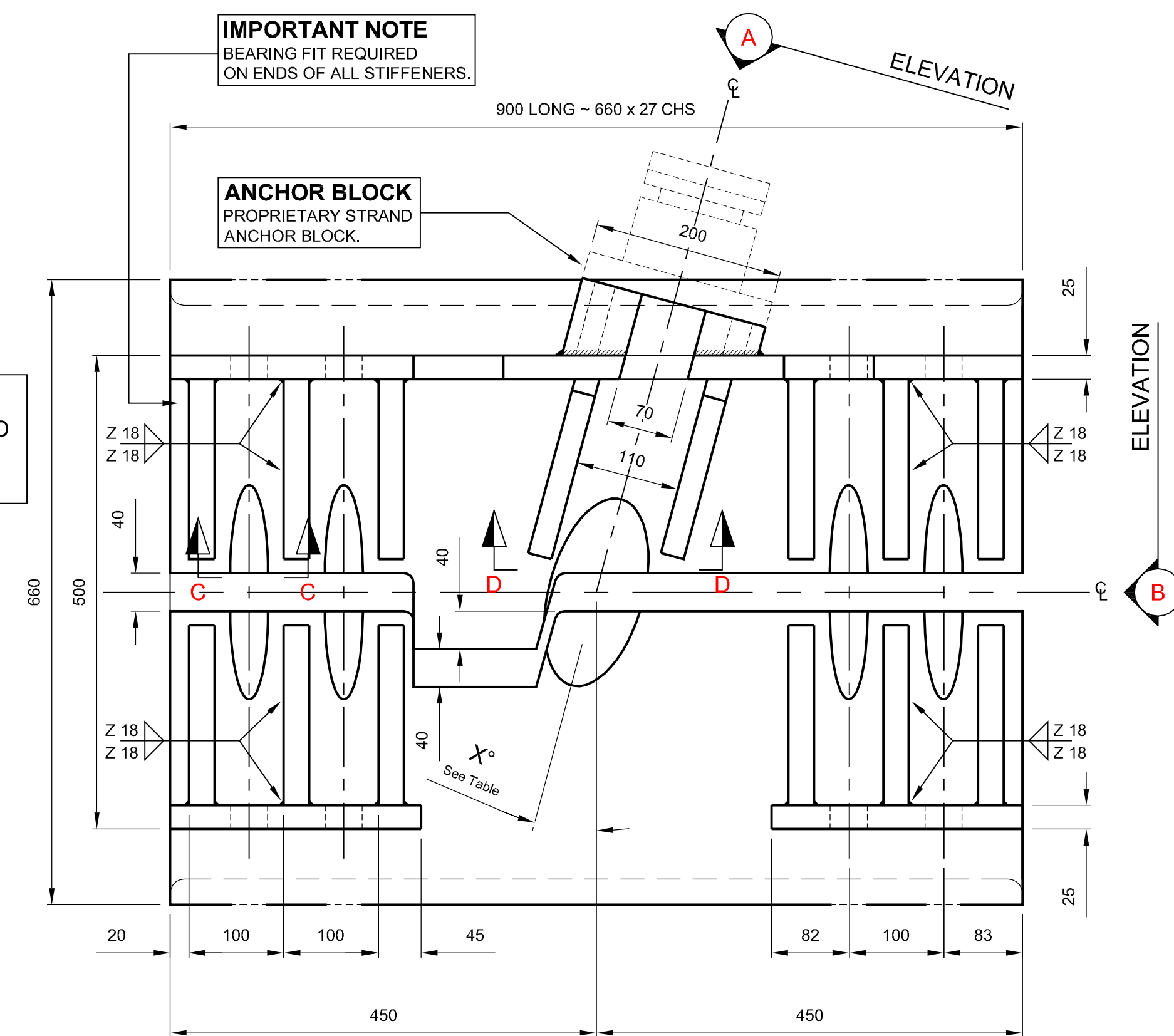
ELEVATION 'A'
Scale 1:5



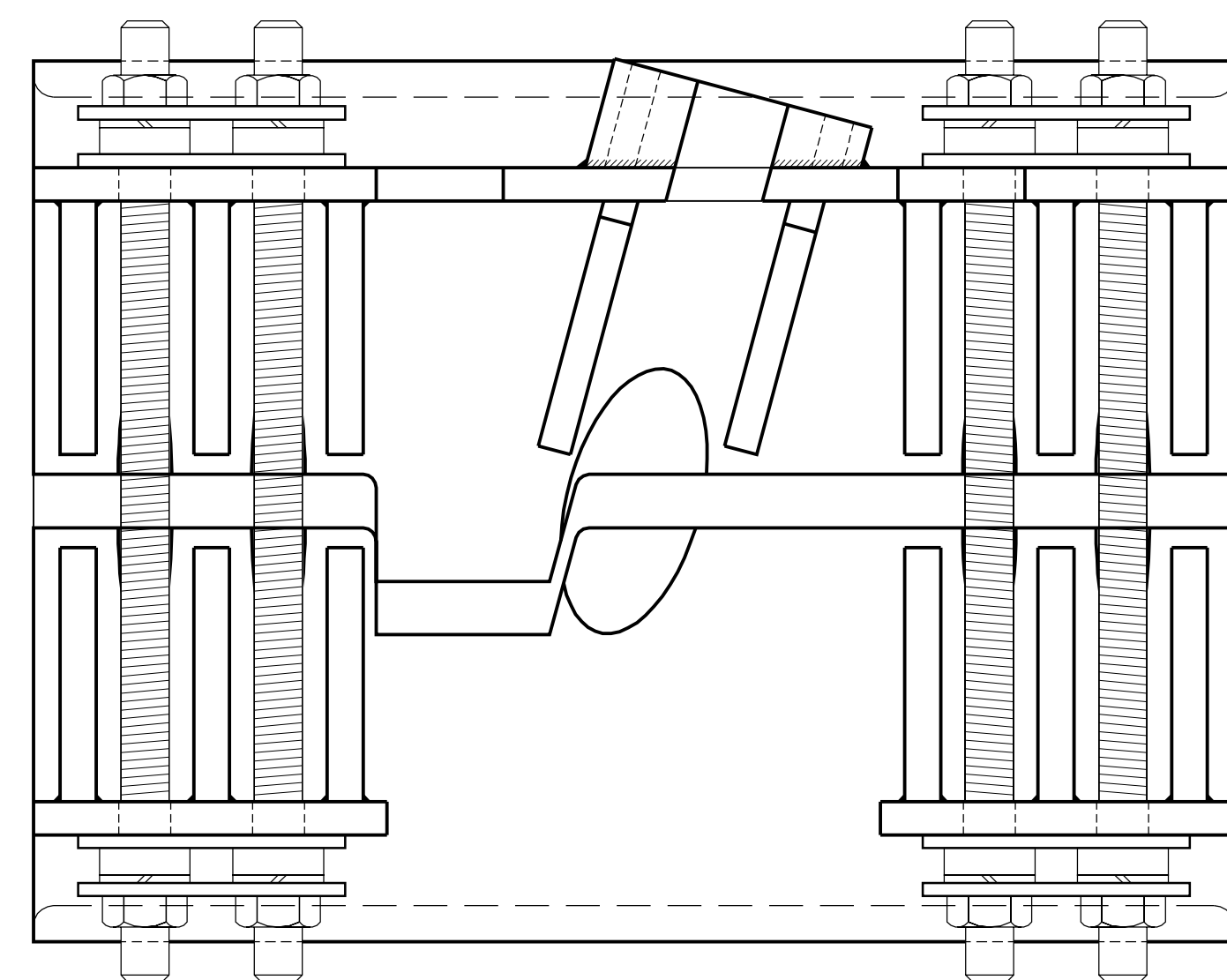
SECTION 'E - E'
Scale 1:5



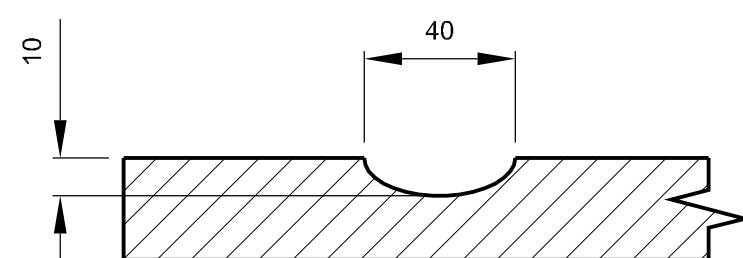
1° TAPERED SHIMS
4No. REQUIRED AS SHOWN
(4No. REQUIRED OPPOSITE HAND)
Scale 1:5



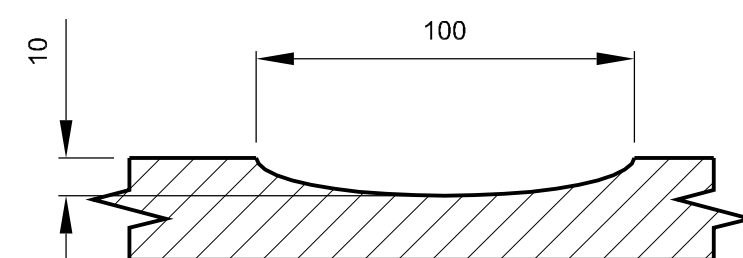
TEMPORARY CABLE BAND
FRONT ELEVATION
Scale 1:5



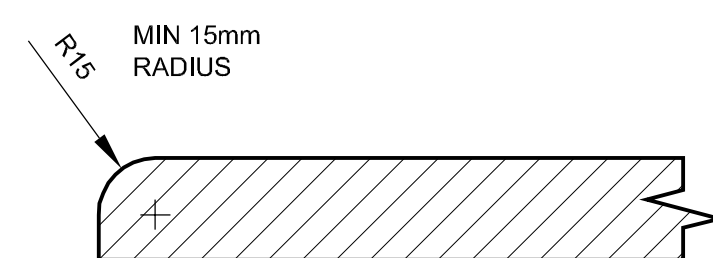
TEMPORARY CABLE BAND ELEVATION
SHOWING LOCATION OF 680mm LONG RODS
Scale 1:5



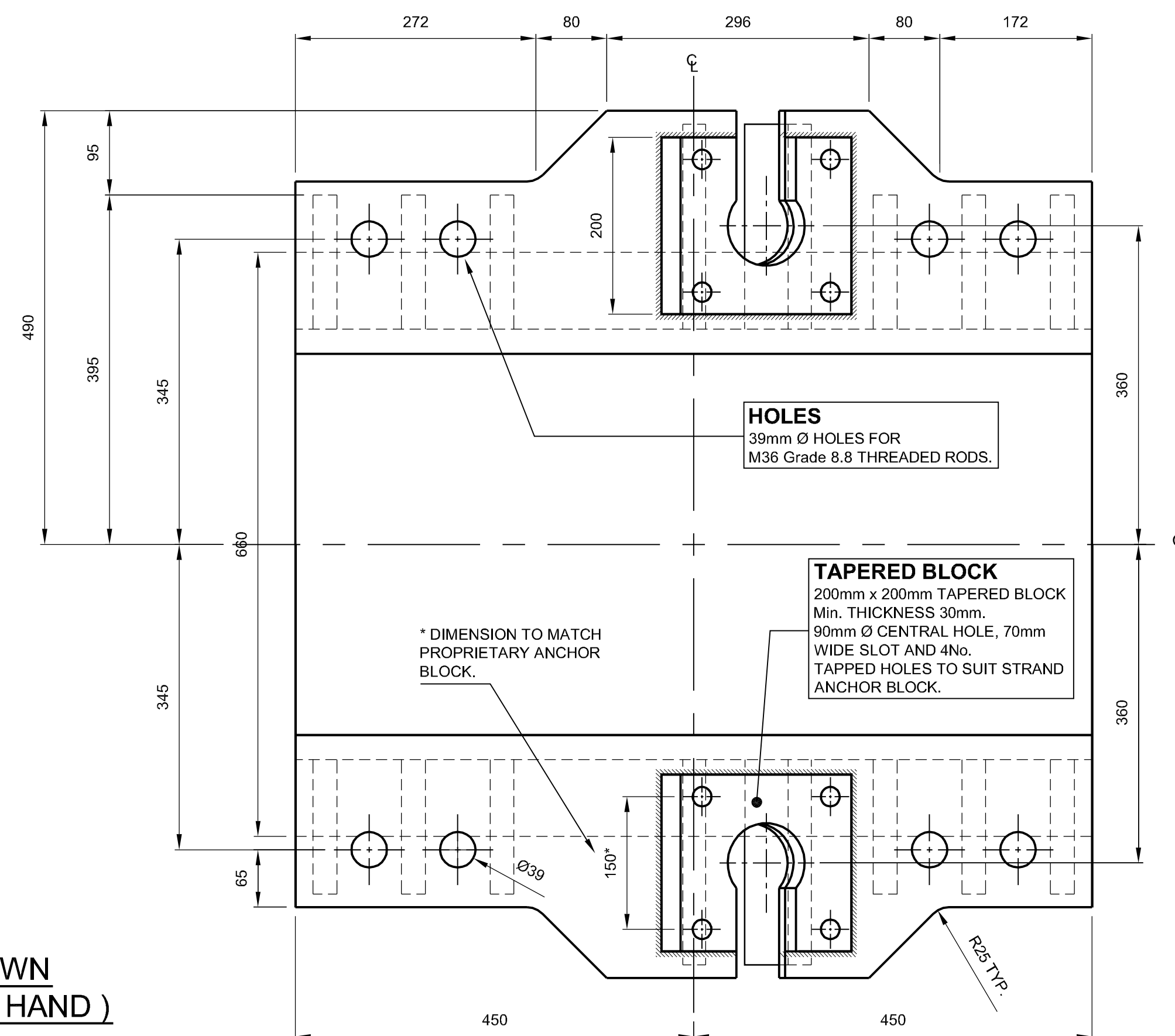
SECTION 'F -F'
Scale 1:2



SECTION 'C -C'
Scale 1:2



SECTION 'D -D'
Scale 1:2



TEMPORARY CABLE BAND
PLAN
Scale 1:5


GENERAL NOTES

1. ALL DIMENSIONS ARE IN MILLIMETRES UNLESS OTHERWISE STATED.
2. DIMENSIONS MUST NOT BE SCALED FROM THIS DRAWING.
3. CHS TO BE S355J2H STEEL TO EN10210-1.
4. ALL STEEL PLATE TO BE S355J2+N TO EN10025-2.
5. PROTECTIVE TREATMENT - ALUMINIUM METAL SPRAY WITH SEALER APPLIED TO OUTER SURFACES ONLY.
6. SEE DRAWING No's 47484/W/921 & 922 FOR REPLACEMENT OF CABLE BAND BOLT DETAILS - STAGE 1.

C	11/11/00	ISSUED AS "AS - BUILT"	MPS	MJB	CPE
B	12/05/2009	WASHER PLATE DETAIL ADDED.	MPS	MJB	CPE
A	24/03/2000	INITIAL ISSUE.	MPS	MJB	CPE
Rev	Date	Detail	Made	Chk'd	App'd

Status :

AS BUILT

Client:  Forth Estuary Transport Authority

Project : **FORTH ROAD BRIDGE**
MAIN CABLE
DEHUMIDIFICATION SYSTEM

ADDITIONAL WORKS
TEMPORARY
CABLE BANDS TYPE 1 & 3
STEELWORK DETAILS

Eng : MJB	CAD : MPS
Chk'd : MJB	App'd : CPEC
Date : MARCH 2009	Scale : AS SHOWN

AECOM

5th Floor
2 City Walk,
LEEDS, LS11 9AR

Tel: +44 (0) 113 391 6800
Fax: +44 (0) 113 391 6899
www.aecom.com

No. 47484/W/923	Rev: C
-----------------	--------