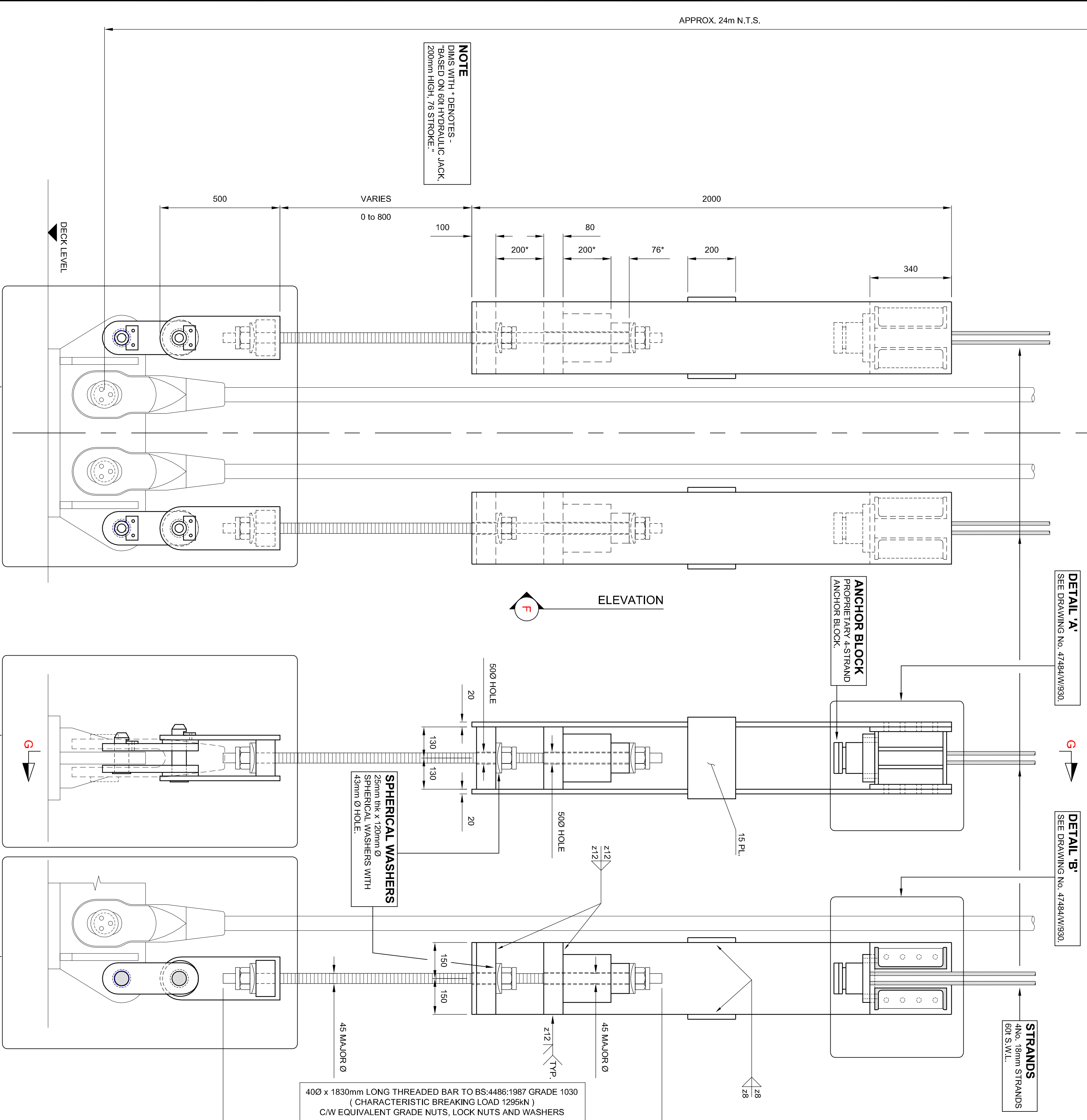


STAGE 2 OUTLINE PROCEDURE

- TASKS 1, 3, 4, 8, AND 9 OF THE FOLLOWING PROCEDURE SHALL BE CARRIED OUT BY C.S.L. IN THE PRESENCE OF THE PROJECT MANAGERS INSPECTOR. TASKS 2, 5, 6 AND 7 SHALL BE CARRIED OUT BY F.E.T.A.
1. C.S.L. SHALL INSTALL AN ADDITIONAL UPPER TEMPORARY CABLE BAND AS DESCRIBED IN STAGE 1, WITH RODS SPANNER TIGHT.
 2. THE TEMPORARY CABLE BAND THREADED RODS SHALL BE CAREFULLY TENSIONED BY F.E.T.A. TO AN APPROVED SEQUENCE IN ORDER TO MAINTAIN EVEN AND EQUAL GAPS BETWEEN TWO HALVES.
 3. C.S.L. SHALL INSTALL TEMPORARY STRANDS, ANCHOR BLOCKS, ADJUSTABLE ANGERS AND PROPRIETARY 60t JACKS TO AN APPROVED PROCEDURE.
 4. C.S.L. SHALL SIMULTANEOUSLY TENSION TEMPORARY STRANDS IN MAX. 5t INCREMENTS UNTIL ALL LOAD IS REMOVED FROM THE PERMANENT HANGERS. EXPECTED TENSION IN EACH OF THE 4 HANGER LEGS IS 40t (DEAD LOAD ONLY) TO 45t (WITH TRAFFIC).
 5. F.E.T.A. SHALL DE-TENSION ALL CABLE BAND BOLTS IN 1/4 TURN INCREMENTS TO AN APPROVED SEQUENCE AND MANOEUVRE THE TWO HALVES OF THE CABLE BAND TO ALLOW THE DAMAGED CABLE BAND BOLT TO BE REMOVED.
 6. CAREFULLY REPLACE THE DAMAGED CABLE BAND BOLT WITH A NEW BOLT.
 7. F.E.T.A. SHALL TENSION ALL BOLTS IN ACCORDANCE WITH THEIR EXISTING TENSIONING PROCEDURES.
 8. WHEN THE PERMANENT CABLE BAND BOLTS HAVE BEEN FULLY TENSIONED, C.S.L. SHALL SIMULTANEOUSLY DE-TENSION TEMPORARY STRANDS IN MAX. 5t INCREMENTS THEN REMOVE TEMPORARY HANGERS IN A SAFE MANNER.
 9. THE TEMPORARY CABLE BAND THREADED RODS SHALL BE CAREFULLY DETENSIONED BY F.E.T.A.
 10. C.S.L. SHALL REMOVE THE TEMPORARY CABLE BAND REINSTATE CABLE GUARD WRAPPING AND SEALING MATERIALS.



GENERAL NOTES

1. ALL DIMENSIONS ARE IN MILLIMETRES UNLESS OTHERWISE STATED.
2. DIMENSIONS MUST NOT BE SCALED FROM THIS DRAWING.
3. SEE DRAWING No. 47484/W/923 FOR TEMPORARY CABLE BAND STEELWORK DETAILS.

Client: **Forth Estuary Transport Authority**

Project: **FORTH ROAD BRIDGE
MAIN CABLE
DEHUMIDIFICATION SYSTEM**

Title: **ADDITIONAL WORKS
CABLE BAND BOLT REPLACEMENT
NE SIDE SPAN - PP 18NE STAGE 2**

Eng:	MLB	Calcd:	MPS
Chk'd:	MLB	App'd:	CPEC
Date:	MARCH 2009	Scale:	AS SHOWN

90 Fife Park,
Fife, KY11 1JF
Tel: +44 (0) 113 391 8800
Fax: +44 (0) 113 391 8888
Email: info@aecom.co.uk

AECOM

No. 47484/W/925

Rev: C