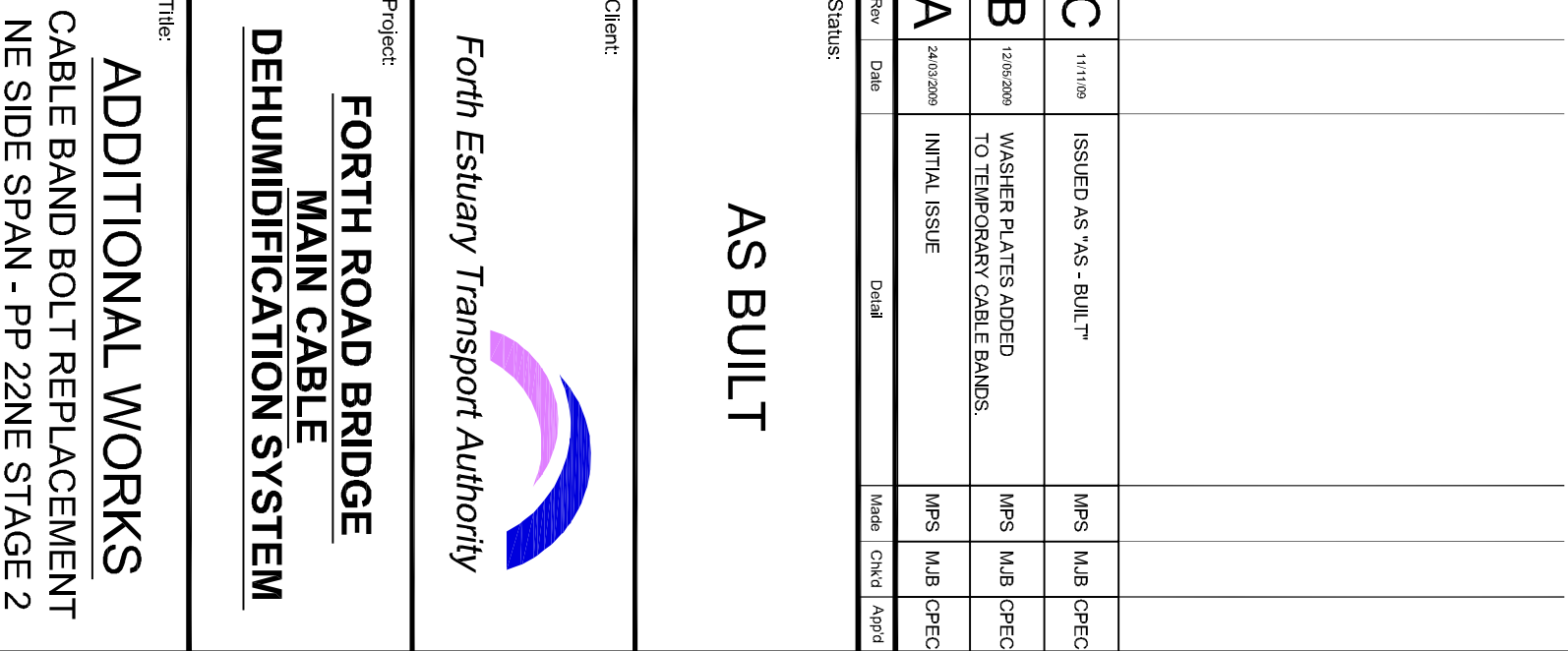


1. ALL DIMENSIONS ARE IN MILLIMETRES UNLESS OTHERWISE STATED.
2. DIMENSIONS MUST NOT BE SCALED FROM THIS DRAWING.
3. SEE DRAWING NO. 47484/W/923 FOR TEMPORARY CABLE BAND STEELWORK DETAILS.



Order	Date	Detail	Make	Qty	Apprs
C	11/11/00	ISSUED AS "AS-BUILT"	MPS	MLB	CPEC
B	12/03/2000	WASHER PLATES ADDED TO TEMPORARY CABLE BANDS.	MPS	MLB	CPEC
A	24/03/2000	INITIAL ISSUE	MPS	MLB	CPEC

AS BUILT



ject:
FORTH ROAD BRIDGE
MAIN CABLE
DEHUMIDIFICATION SYSTEM

ADDITIONAL WORKS

Eng:	MJB	CAD:	MPS
CHK'd:	MJB	App'd:	CPEC

5th Floor,
12 City Walk,
LEEDS, LS11 9AR

Tel: +44 (0) 113 391 6881
Fax: +44 (0) 113 391 6882
www.aecom.co.uk