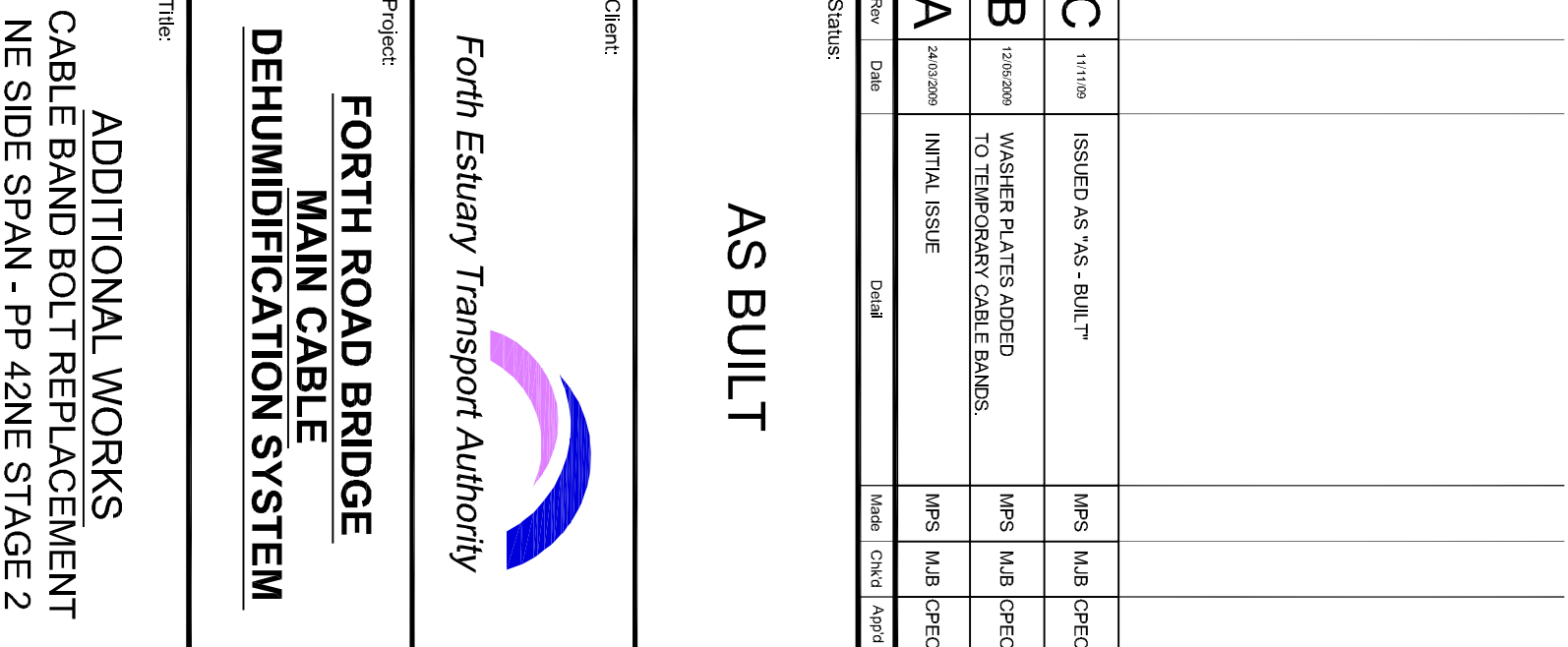


GENERAL NOTES

1. ALL DIMENSIONS ARE IN MILLIMETRES UNLESS OTHERWISE STATED.
2. DIMENSIONS MUST NOT BE SCALED FROM THIS DRAWING.
3. SEE DRAWING NO. 47484/W/923 FOR TEMPORARY CABLE BAND STEELWORK DETAILS.

3. SEE DRAWING No. 47484/W/923 FOR
TEMPORARY CABLE BAND STEELWORK
DETAILS.



AS BUILT

Forth Estuary Transport Authority

FORTH ROAD BRIDGE
MAIN CABLE
DEHUMIDIFICATION SYSTEM

ADDITIONAL WORKS
CABLE BAND BOLT REPLACEMENT
NE SIDE SPAN - PP 42NE STAGE 2

Eng:	MJB	CAD:	MPS
Chk'd:	MJB	App'd:	CPEC
Date:	MARCH 2009	Scale:	AS SHOWN

15th Floor,
2 City Walk,
LEEDS, LS11 9AR

Tel: +44 (0) 113 391 6800
Fax: +44 (0) 113 391 6899
www.aecom.com

No. 47484/W/929

○