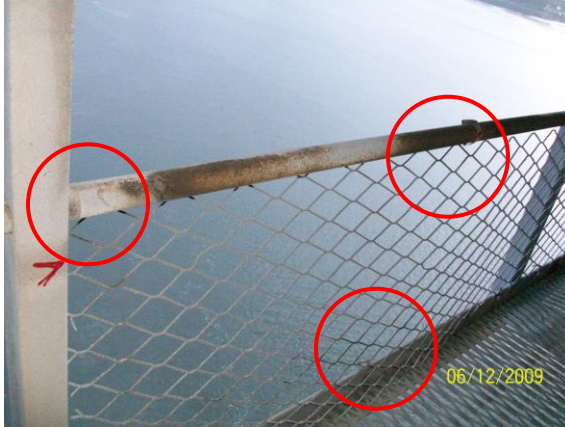


NORTH EAST



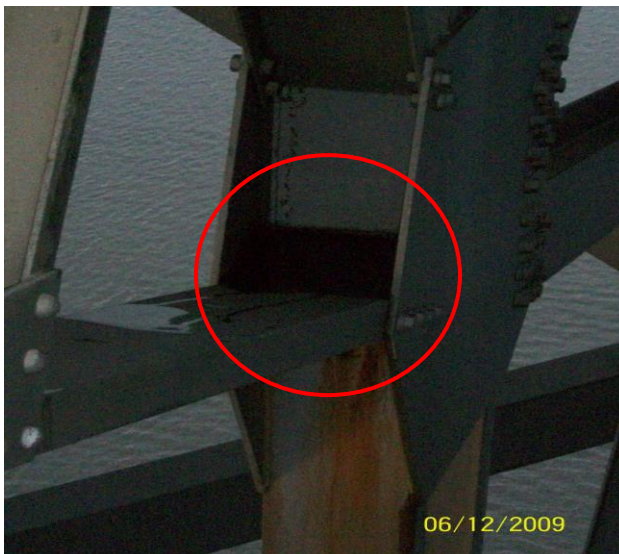
P.P.47-48 N.E.

MESH FIXINGS BORKEN, AT
THREE LOCATIONS
INDICATED.



P.P.56 N.E.

2 SPLICE BOLTS LOOSE (EAST),
2 SPLICE BOLTS LOOSE (WEST).



P.P.60 N.E.

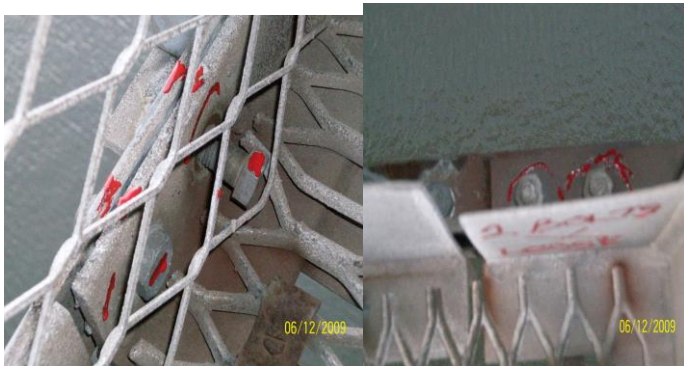
BEAM 12 CONNECTION TO
VERTICAL TRUSS IS HOLDING
WATER.

**(THIS CAN BE ACCESSED
FROM GANTRY ACCESS
SCAFFOLD)**



P.P.61 N.E.

WALKWAY DIAGONAL
BRACER TO BEAM 16 HAS
LOOSE LINDAPTOR.



P.P.62 N.E.

2 SPLICE BOLTS LOOSE (EAST),
2 SPLICE BOLTS LOOSE (WEST).



P.P.73 N.E.

2 SPLICE BOLTS LOOSE
(WEST).



P.P.82 N.E.

2 SPLICE BOLTS LOOSE
(EAST),

2 SPLICE BOLTS LOOSE
(WEST).

SMALL GRATING PANEL –
BOTH FLOOR CLIP ARE
LOOSE, **PANEL NOT
SECURED.**



P.P.89 N.E.

2 SPLICE BOLTS LOOSE
(EAST),

2 SPLICE BOLTS LOOSE
(WEST).



P.P.89 N.E.

3 MESH FIXINGS BROKEN.



P.P.90-91 N.E.

11 MESH FIXINGS BROKEN.
ALL BOTTOM FIXINGS.

P.P.91 N.E.

ALSO HAS
2 SPLICE BOLTS LOOSE
(EAST),
2 SPLICE BOLTS LOOSE
(WEST).



P.P.97 N.E.

2 SPLICE BOLTS LOOSE
(EAST),
2 SPLICE BOLTS LOOSE
(WEST).



P.P.100 N.E.

2 SPLICE BOLTS LOOSE
(EAST),
2 SPLICE BOLTS LOOSE
(WEST).

SOUTH EAST



P.P.97 S.E.

2 SPLICE BOLTS LOOSE
(EAST),
INFORMATION
2 SPLICE BOLT HOLES
MISSING (WEST).



P.P.96 S.E.

INFORMATION
OPPOSITE END.
2 SPLICE BOLT HOLES
MISSING (WEST).



P.P.91 S.E.

2 SPLICE BOLTS LOOSE (EAST), 2 SPLICE BOLTS LOOSE (WEST).



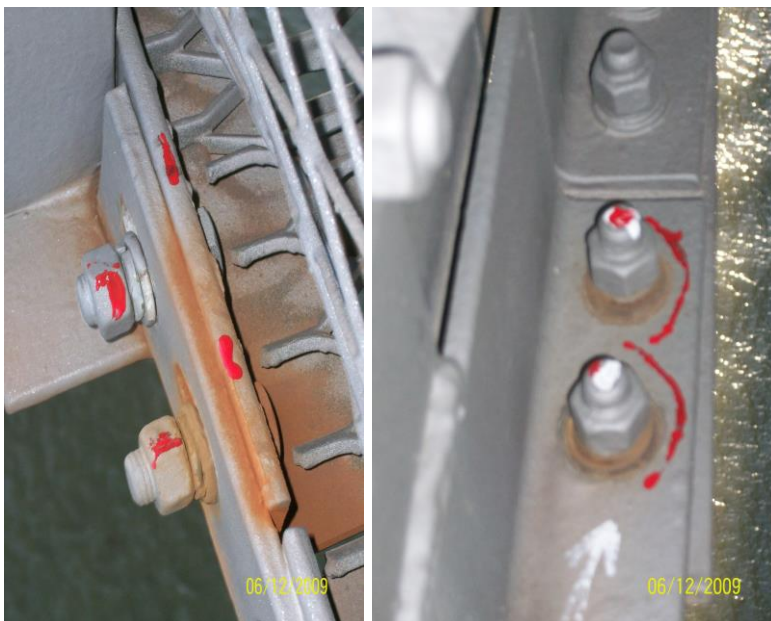
P.P.97 S.E.

EARLIER STAGES OF BOLTS
SHOWING SIGNS OF
BECOMING LOOSE. (EAST).



P.P.88 S.E.

2 SPLICE BOLTS
LOOSE (EAST),
2 SPLICE BOLTS
LOOSE (WEST).



P.P.79 S.E.

2 SPLICE BOLTS LOOSE
(EAST),
2 SPLICE BOLTS LOOSE
(WEST).

MESH ALSO REQUIRES 3
FIXINGS.





P.P.72 S.E.

2 SPLICE BOLTS LOOSE
(EAST),
2 SPLICE BOLTS LOOSE
(WEST).



P.P.69 S.E.

2 SPLICE BOLTS LOOSE
(EAST),
2 SPLICE BOLTS LOOSE
(WEST).



P.P.65 S.E.

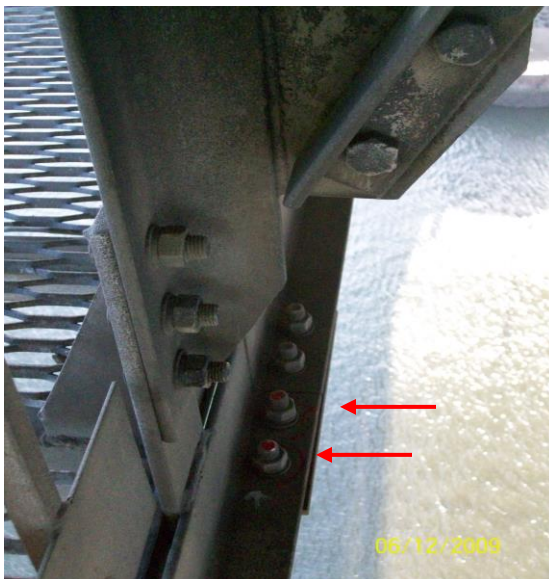
2 SPLICE BOLTS LOOSE
(EAST),
2 SPLICE BOLTS LOOSE
(WEST).

**Q. ARE NEW
SPRING/GRIP WASHERS
BEING USED ?**

AS EAST SIDE APPEARS TO
HAVE RECENTLY BEEN
REPAIRED.



P.P.65 S.E.
REDUNDANT RATCHET
STRAPS REQUIRE TO BE
REMOVED.



P.P.60 S.E.
2 SPLICE BOLTS LOOSE
(WEST).



P.P.57 S.E.
2 SPLICE BOLTS LOOSE (EAST), 2 SPLICE BOLTS
LOOSE (WEST).



P.P.56 S.E.

1 SPLICE BOLT LOOSE (EAST),
2 SPLICE BOLTS LOOSE (WEST).



P.P.55 S.E.

1 SPLICE BOLT LOOSE (WEST).



P.P.52 S.E.

BEAM 12 CONNECTION TO
VERTICAL TRUSS HOLDING
WATER/DEBRIS.

N.B. THIS POSITION CAN BE
ACCESSED FROM GANTRY
ACCESS LADDER.

NORTH EAST



P.P.52 N.E.

BEAM 11 CONNECTION TO
VERTICAL TRUSS HOLDING
WATER/DEBRIS.

N.B. THIS POSITION CAN BE
ACCESSED FROM GANTRY
ACCESS LADDER.