



**P.P.46 S.W.**

MESH PANEL LOOSE – 2  
LOCATIONS



**P.P.53 S.W.**

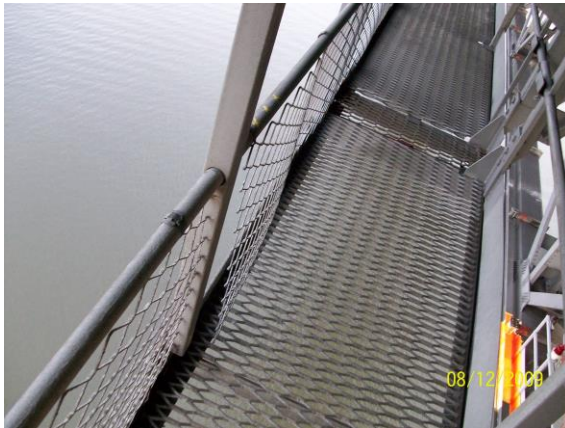
REPLACE DAMAGED SPLICE  
BOLT & NUT (WEST SIDE)



**P.P.57 S.W.**

2 SPLICE BOLTS LOOSE –  
EAST SIDE

2 SPLICE BOLTS LOOSE –  
WEST SIDE

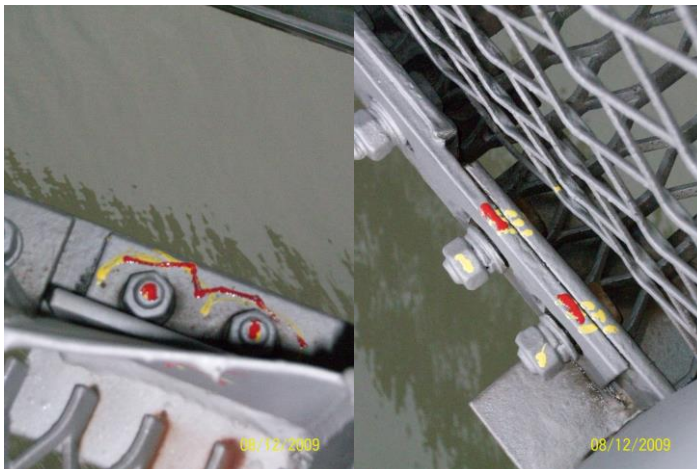


**P.P.72 S.W.**  
MESH LOOSE AT SOUTH  
SIDE OF P.P.



**P.P.72 S.W.**  
2 SPLICE BOLTS LOOSE –  
EAST SIDE

2 SPLICE BOLTS LOOSE –  
WEST SIDE



**P.P.78 S.W.**  
2 SPLICE BOLTS LOOSE –  
EAST SIDE

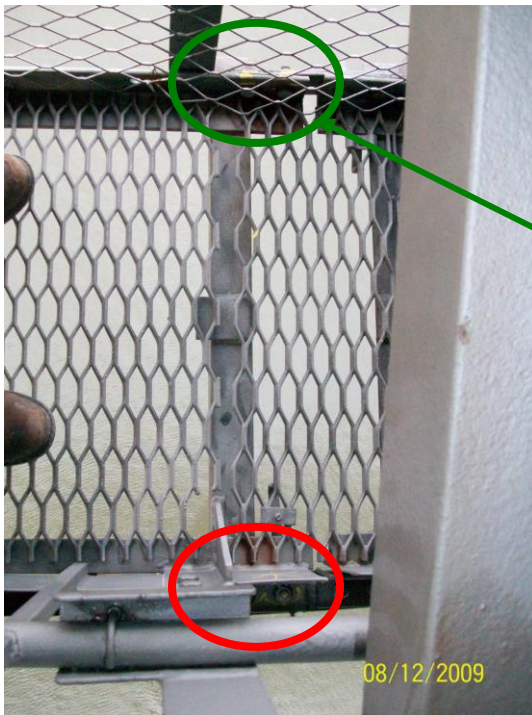
2 SPLICE BOLTS LOOSE –  
WEST SIDE





**P.P.87 S.W.**

LINDAPTOR WALKWAY  
CHANNEL ANCHORS TO  
OUTRIGGER LOOSE

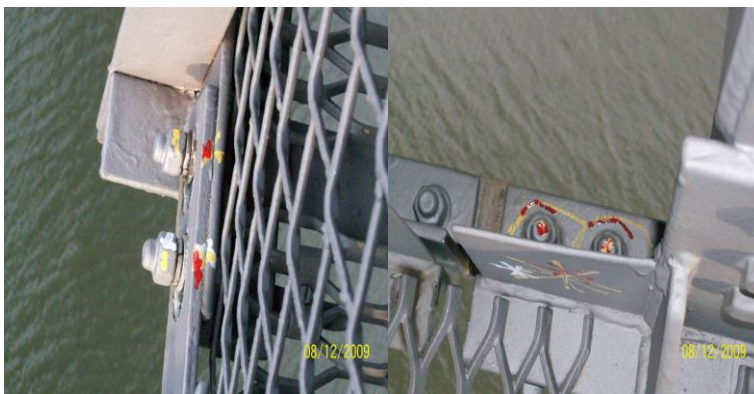


**P.P.88 S.W.**

2 SPLICE BOLTS LOOSE –  
EAST SIDE

**INFO**

**2 SPLICE BOLTS WEST  
SIDE HAVE BEEN  
REPAIRED**



**P.P.100 N.W.**

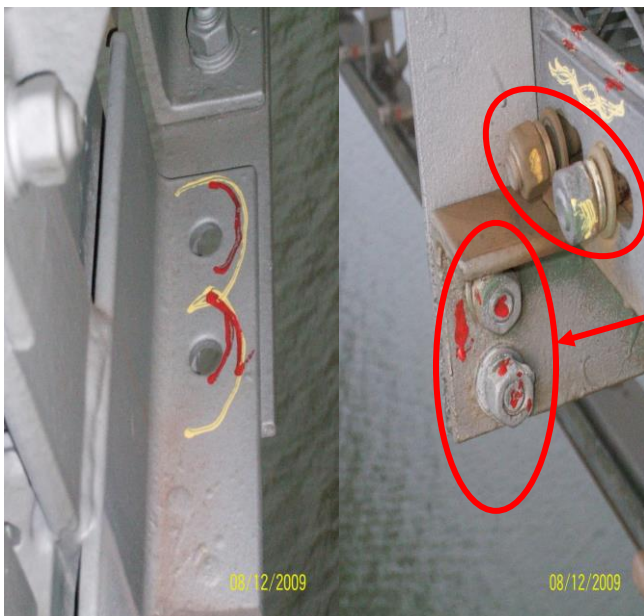
2 SPLICE BOLTS LOOSE –  
EAST SIDE

2 SPLICE BOLTS LOOSE –  
WEST SIDE



**P.P.97 N.W.**

SMALL FLOOR PANEL REQUIRES  
SECURING

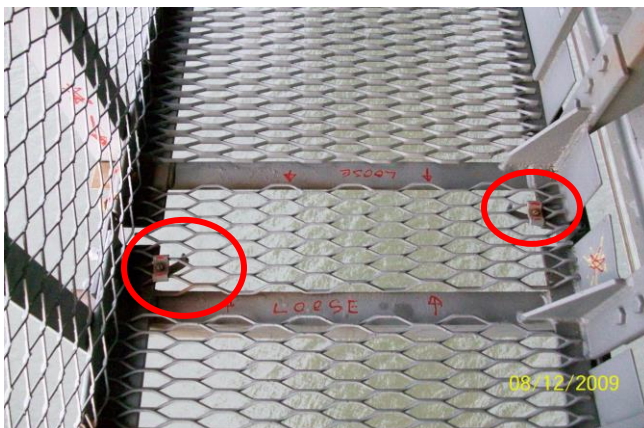


**P.P.95 N.W.**

2 SPLICE BOLTS MISSING –  
EAST SIDE

2 SPLICE BOLTS LOOSE –  
WEST SIDE

2 BOLTS LOOSE ON  
VERTICAL ANGLE



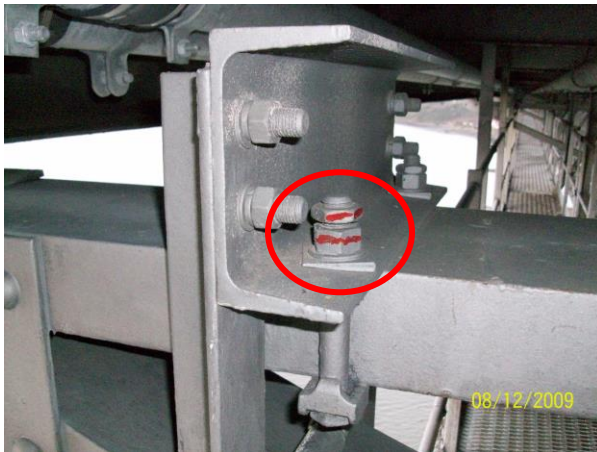
**P.P.95 N.W.**

FLOOR PANEL LOOSE,  
BOTH FLOOR CLIPS  
REQUIRE SECURING



**P.P.86 N.W.**

VERTICAL WALKWAY  
ANGLE SUPPORT 2 BOLTS  
LOOSE AT TOP  
CONNECTION



**P.P.78 N.W.**

LOCKING NUT REQUIRES  
TIGHTENING