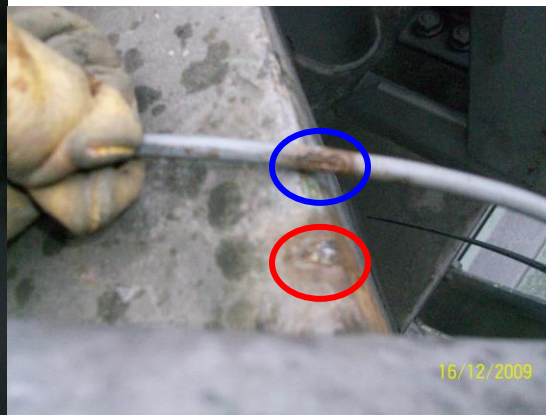
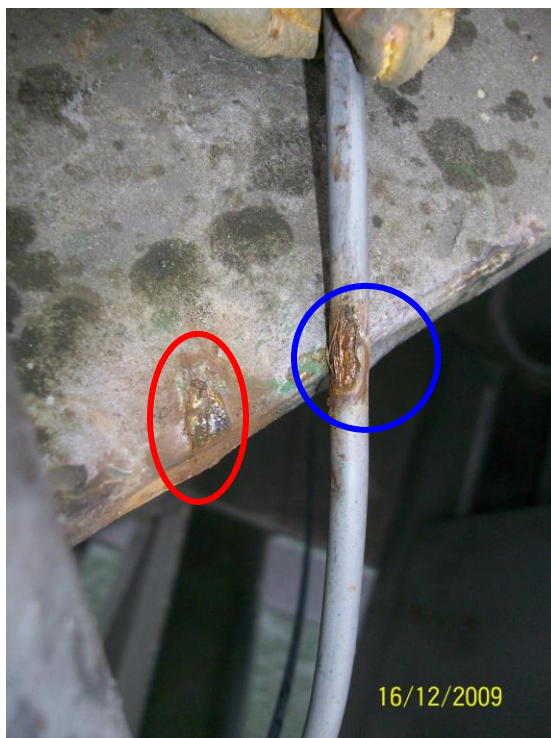


P.P. 100 N.W.

ANEMOMETER CONDUIT AND
CABLE REQUIRES PROPER
SECURING, OR REMOVAL IF
REDUNDANT.



P.P.98 N.W.

ANEMOMETER CABLE (**NOT CONNECTED AT OTHER END**) HAS WEAR,
AND IS CAUSING WEAR TO TOP LATERAL.

THIS REQUIRES PROPER SECURING OR **REMOVAL IF REDUNDANT.**