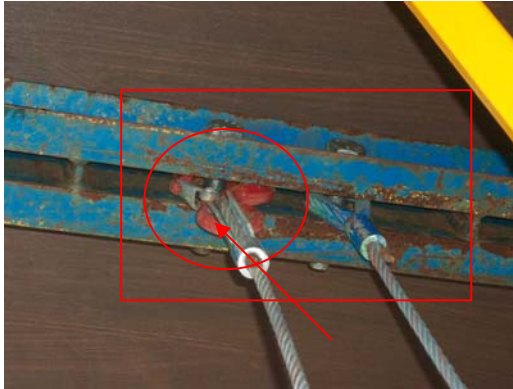
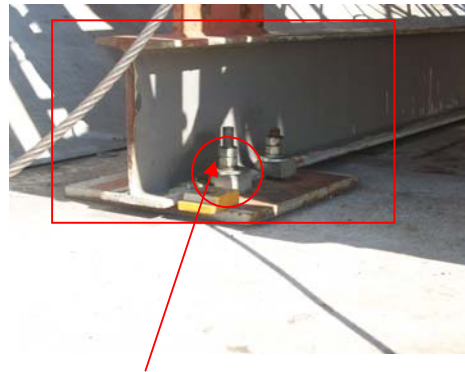




INSPECTION DEPARTMENT
Beeche platform feeder cradles.
DATE.



Beeche platform feeder cradle motor wires and safety wires are attached as shown above to a rectangular secured beam which is attached to the framework of the structure of the platform. Wires have fixed crimped captive hooks which are attached to GRADE. 8.8 . M 24 mm bolts which are located and fixed through the lifting beams.



The above wires will be attached at the bottom to ensure complete stability during travel of the beeche platform to its intended work destination using wire travel bloc-stops, and associated shackle arrangements which are fixed “ H “ beam located and fixed to the dropped object canopy floor across the width of the cradle. . This beam is secured to the aforementioned by fixing bolts which travel through the full depth of the canopy floor. Prior to commencement of operational use, the feeder cradles will be subject to a visual inspection and load test which will be carried out by a competent person. All attachments and fixings will be part of an inspection regime which will be carried out by the platform charge-hand on a regular ongoing basis while the platforms are in operation. Inspections will be carried out and conform to the guidelines laid down as stated in the operational & Maintenance manual for the beeche platform. These inspections will be carried out on a Pre- use, weekly and monthly basis.

Bridge Inspector . :

G:\Inspection Records\FETA inspection 1  
Inspections\Beeche Platform Feeder Crac  
Cradles..doc



<b>INSPECTION DEPARTMENT</b>
<b>Beeche platform feeder cradles.</b>
<b>DATE.</b>

G:\Inspection Records\FETA inspection records for Main Towers\Independent  
Inspections\Beeche Platform Feeder Cradle Inspections\Beeche Platform Feeder  
Cradles..doc