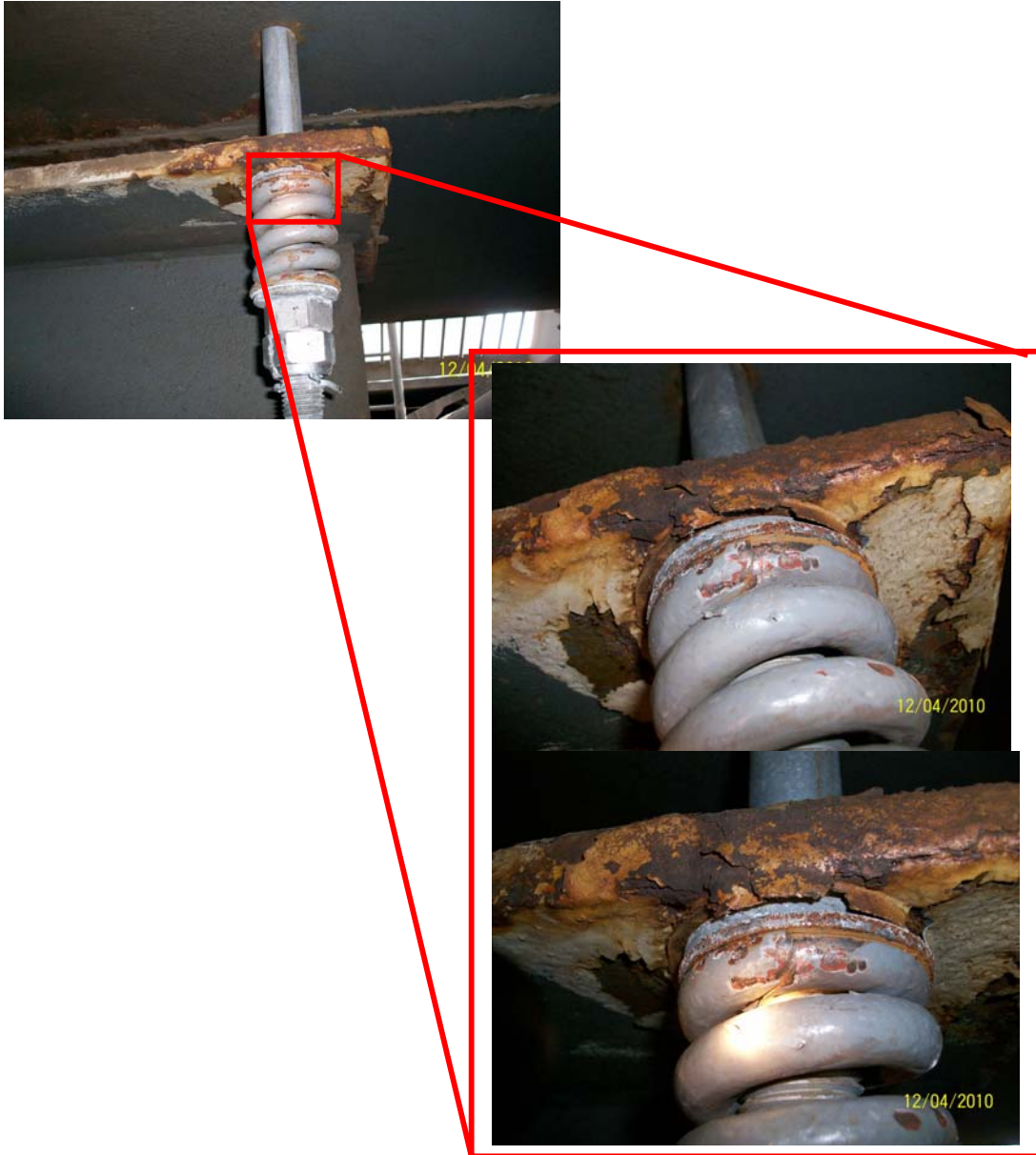


DURING THE BRIDGE INSPECTORS WEEKLY SPRING COMPRESSION DIMENSIONAL CHECK, IT WAS NOTED THAT MW5 EAST SPRING HAS SPLIT. SEE PHOTOGRAPHS



MORE PHOTOGRAPHS CAN BE LOCATED AT:

G:\filing\BC_FILES\BC06 Suspended Structure Expansion Joints\FRB Inspection Reports\Independent Inspections\MW5 EASTSPRING DEFECT12.04.10

Bridge Inspectors

G:\Inspection Records\FETA Main Expansion Joint Inspection Reports - FOI\Main Tower Demag Expansion Joints - AW ongoing\Independent Inspections\Demag Inspection MW5 East Spring 12.04.10.doc