

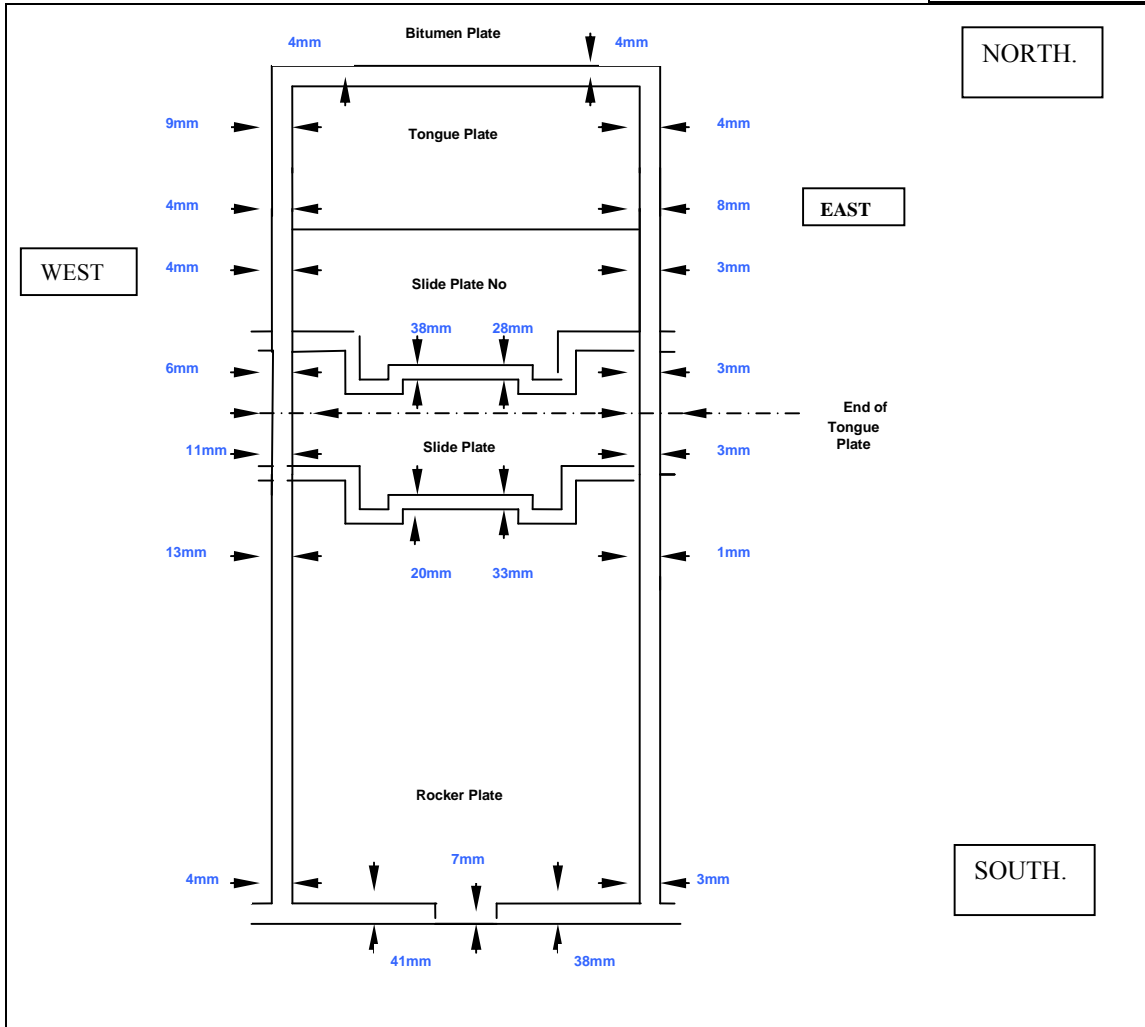


INSPECTION DEPARTMENT
South main tower expansion joint . SE 3.
DATE: 08/10/11.

◀ Inspection Record Sheet:-		
Subject :- Demag plate set removal	Location: South main tower expansion joint . SE 3.	
Pre-removal Dimensional Checks		
Inspection Record Sheet:- BC. 06/ SSSE. 08/10/11. PLATE SE 3.		
Subject :- Demag plate set removal	Location. South east main tower.SSE 3.	
Pre & Post removal Dimensional Checks		
Pre-removal Checks		
Task	Yes	No
* Record top side clearance gaps as identified on survey sht 2 of 4	✓	
* Mismatch between adjacent plates, rocker SE 2 – N. 4 mm . S.12mm	✓	
rocker SE 4 - N. 4 mm . S. 8 mm	✓	
Slide plate No. 1 SE 2 - 5mm Centre	✓	
Slide plate No.1 SE 4 - 2mm Centre	✓	
Tongue plate SE 2 - 4mm . S.6 mm	✓	
Tongue plate SE 4 - 2mm . S.2 mm	✓	
* Spring lengths:- rocker plate:- 150 mm	✓	
* Spring lengths:- tongue plate:- east. 82 mm West. 82 mm	✓	
Mismatch between adjacent plates	✓	
Main span end trimmer & rocker plate:- east. 2mm west. 4mm		
Post Removal Checks		
Task	Yes	No
Slide plate cam radius:-		✓
* Bush wall thickness: <u>External only recorded</u> (1) 2-4mm (2) 0-4mm (3) 1-4 mm (4) 2-4 mm	✓	
*Radius girder wear plate thickness:- As per drawing.		✓
* Tongue plate radius length:- As per drawing.		✓
* Tongue plate end thickness:- Worn to nothing	✓	
Remedial & Completion Checks		
Task	Yes	No
* Top side clearance gaps (complete sht 3 of 4)	✓	
* Pins and bushes replaced:- No pins or bushes replaced .		✓
*Springs and pins replaced:- No springs or pins replaced .		✓
* Spring lengths:- rocker plate:- 150 mm		
*Spring lengths:- tongue plate:- east. 82 mm west. 82 mm		
* Complete comment sheet 4 of 4 (if required)		
Inspected by:	Date: 08/10/11.	



INSPECTION DEPARTMENT
South main tower expansion joint . SE 3.
DATE: 08/10/11.



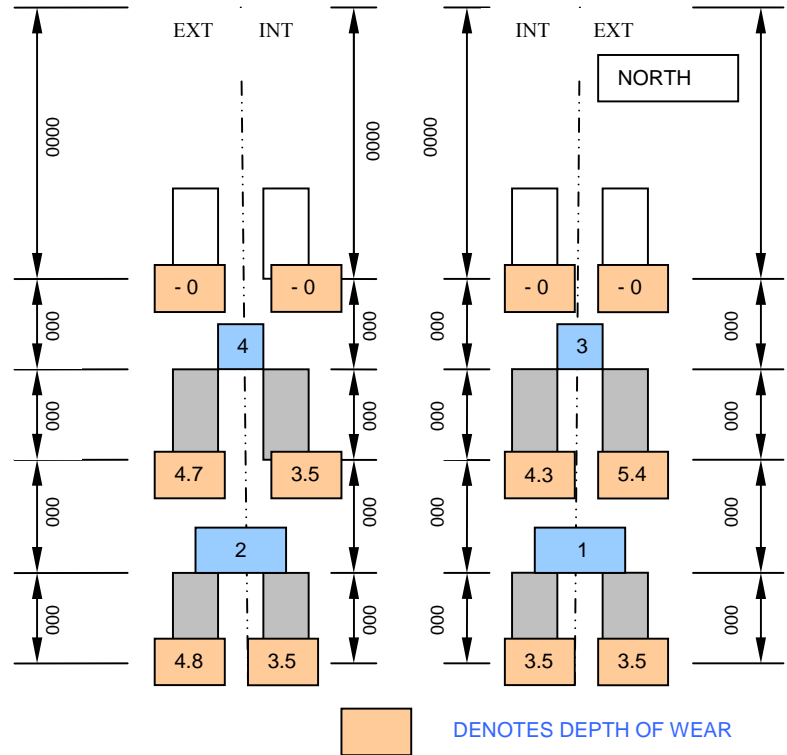
Inspection Record Sheet:-	
Subject :- Demag plate set removal.	
Pre-removal Dimensional Checks	
Inspected by:	
Date:	08/10/11.



<b>INSPECTION DEPARTMENT</b>
<b>South main tower expansion joint . SE 3.</b>
<b>DATE: 08/10/11.</b>

**Inspection Record Sheet:- BC. 06/ SSSE. 08/10/11. PLATE SE 3.**  
**Subject:- Demag Plate Set Removal**      **Location:- South East main tower. SE.3.**

Pin No.	Internal Dia.	External Dia.
1	39mm	39mm
Bush Thkns	Top	N/A
	Bottom	N/A
	North	N/A
	South	N/A
Pin No.	Internal Dia.	External Dia.
2	39mm	39mm
Bush Thkns	Top	N/A
	Bottom	N/A
	North	N/A
	South	N/A
Pin No.	Internal Dia.	External Dia.
3	39mm	39mm
Bush Thkns	Top	N/A
	Bottom	N/A
	North	N/A
	South	N/A
Pin No.	Internal Dia.	External Dia.
4	39mm	39mm
Bush Thkns	Top	N/A
	Bottom	N/A
	North	N/A
	South	N/A



**Bush bore dimensions. :- ( largest across oval, horizontal axis. ) - No dimensions taken**

Inner. : ( 1 ) N/A   ( 2 ) N/A   ( 3 ) N/A   ( 4 ) N/A  
 Outer. : ( 1 ) N/A   ( 2 ) N/A   ( 3 ) N/A   ( 4 ) N/A

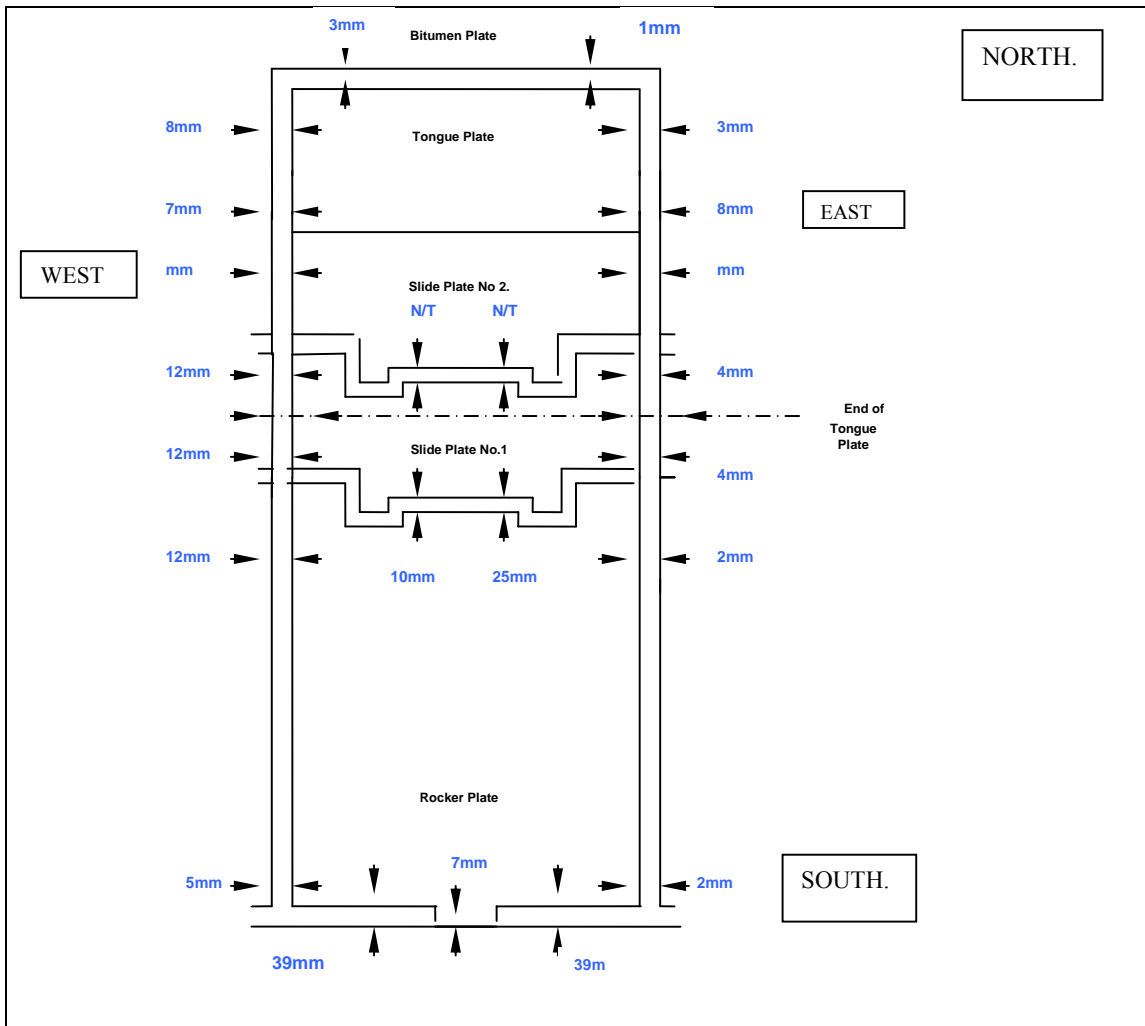
All wear on one side of bush , ie, either North or South.

Note:- It should be recorded that due to time constraints & inclement weather a decision was taken following discussions with the maintenance manager and bridge inspectors that the above information would not be taken on the plate SE 3. to allow reinstatement

Inspected by. :-    Date. 08/10/11.



INSPECTION DEPARTMENT
South main tower expansion joint . SE 3.
DATE: 08/10/11.



Inspection Record Sheet:-	
Subject :- Demag plate set removal	
Post -removal Dimensional Checks	
Inspected by:	
Date:	08/10/11.