



INSPECTION DEPARTMENT
Main tower to cycle track expansion joints.
DATE. 13/04/11

BC 06)

REPORT No 323.

DATE: 13/04/11 TO 13/04/11

EXPANSION JOINTS MAIN TOWER TO CYCLE TRACK

All eight main tower cycle track expansion joints (main-span & side-span) were inspected on the above dates, general findings as follows:
Status remain with regards to extensive wear-down on the sliding plates & apron plates remain as previous inspections, the above wear continues to have an effect on the bituminous surface below.

Tensioning Assemblies: All tensioning assemblies remain in position . no access gained to carry out a visual inspection. Condition taken as an example from previous inspections would suggest they are all in the same condition. Areas of minor corrosion / paint breakdown evident on some bolt heads & hey- pack spring pack pins and fixings.

Steelwork & fittings. : All cycle track expansion joint steelwork & associated fixings remain in a satisfactory condition. Minor discolouration & corrosion evident on bolt heads at certain locations. All welds remain in a satisfactory condition.

Access cradle supprt beams. : All suspended access cradle support beams & fixings remain in a satisfactory condition. Areas of discolouration staining slight corrosion around fixings.

Upper & Lower platforms. : Upper platform . : All steelwork & welds visually remain in a satisfactory condition. All handrails remain intact and secure. Regular monthly cleaning program has been implemented since last inspection, and appears to be working only minor sporadic areas of pigeon droppings evident at time of inspection. Lower platform. : All lower platform floor grillage & fixings remain intact & secure. Slight corrosion staining & paint breakdown on platform handrails evident.

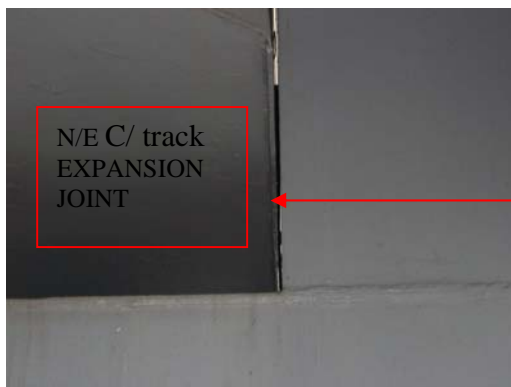
Additional Information .: This supplied information has been investigated before and senior management are aware. Grinding noise apparent on North East (main tower side) at time of inspection. (please refer to attached sheet with photographs showing comparison gaps between N/E & SW.

Bridge Inspector



INSPECTION DEPARTMENT
Main tower to cycle track expansion joints.
DATE. 13/04/11

Photographs showing gaps between steelwork,



Grinding noise being generated by tower movement at time of inspection. Metal to metal.



Gap differences between north east main tower and the south west main tower – main-span sides . Noise being generated by movement on the north east main tower side.