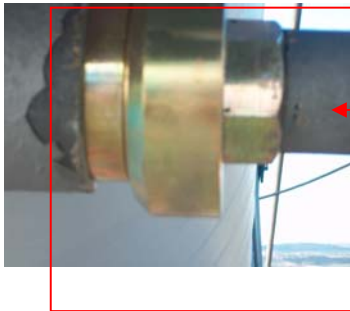
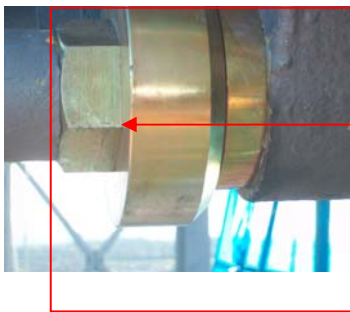


Following a instruction from Maintenance manager _____ bridge inspectors _____ & _____ carried out a complete inspection of all the main cable band nuts & bolts on the north east side span.

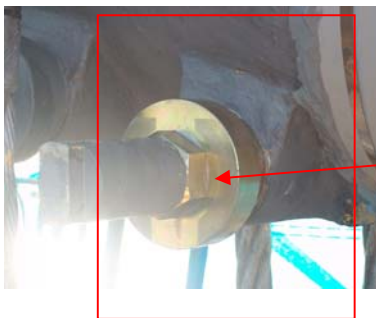
This follows the second replacement of cable band bolt [“B”at PP 32 N/E .](#) on **Thursday 30/09/10.** All cable band nuts & bolts were found to be in a satisfactory condition with no defects being found. Photographs below show the live side of replaced bolt. No photographs showing the dead side of the bolt were taken. A thorough inspection of the condition of the nut on the dead side was carried out. Both bolts & nuts found to be in a satisfactory condition. All photographs can be found on BC. 04. Whilst completing the inspection of the north east side span it should be recorded that a small hole in the cable wrapping was found at PP40 N/E on the upper (south side of the cable band seal.) Photographs were taken by bridge inspector L.Coyle.



Photograph showing the South face of
The live side of replacement bolt &
washers.



Photograph showing the North face
of the live side of replacement bolt
& washers.



Photograph showing the front face of
The live side of replacement bolt &
washers.

INSPECTION DEPARTMENT
INSPECTION. Main cable bolt & nut inspection. North East side span.
DATE. 04/10/10.

Photographs below show the re-wrapping of the exposed area of the main cable where the temporary cable band was positioned to allow the bolt replacement to be carried out. All wrapping and sealing of the collar were found to be in a satisfactory condition.

