

Date.: 08/01/10. Time. Approx 09.30. am.

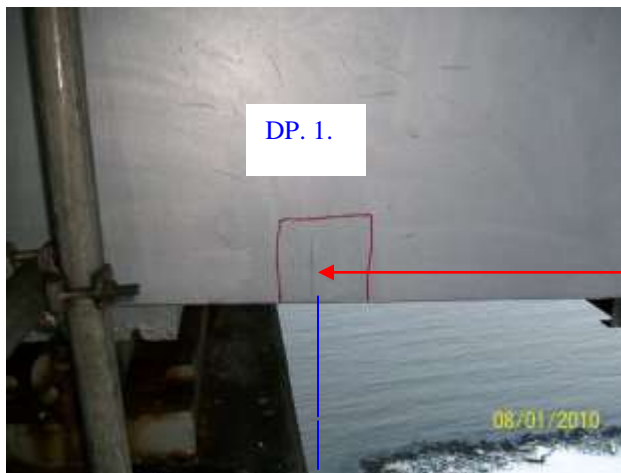
Air temp. : minus - 5.5 degrees celcius.

Surface temp. : minus - 6 degrees celcius.

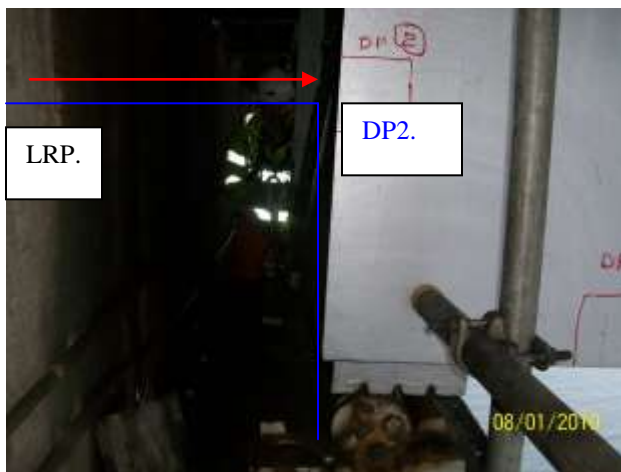
Reference . : [DP – Datum point](#).

LRP. Length reference point

Maintenance managers requested information of North East box girder roller bearing . (Photographs show the east face.) Viaduct box girder movement measurements.



Datum point No 1.: Datum point taken from the side tower leg. (North face). Datum point taken vertically and marked. This is reference measurement point No 1. for possible future longitudinal movement of the east box girder in low temperatures.



Datum point No 2.: Datum point taken from the top of the roller bearing plinth. bearing pad at a measured height of 688 mm. A true line using a spirit level was taken and marked on the face of the side tower. This distance was measured at 433. mm.



Photograph showing current status & condition of the North east viaduct box girder roller bearing & plinth from the east face.

Measurements taken from Datum point No. 2. as recorded –

North east box girder – East face.433mm.

North east box girder – West face.421mm.