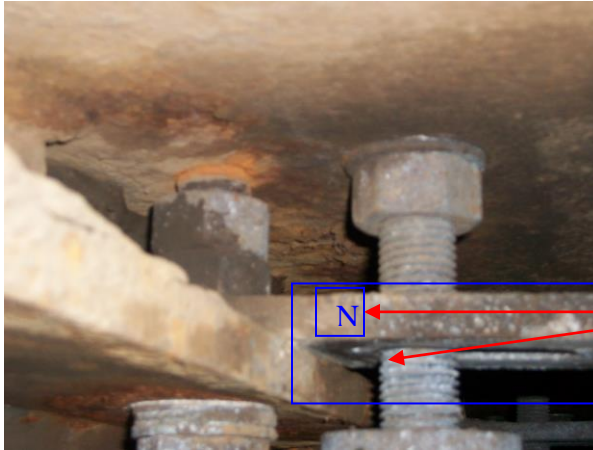




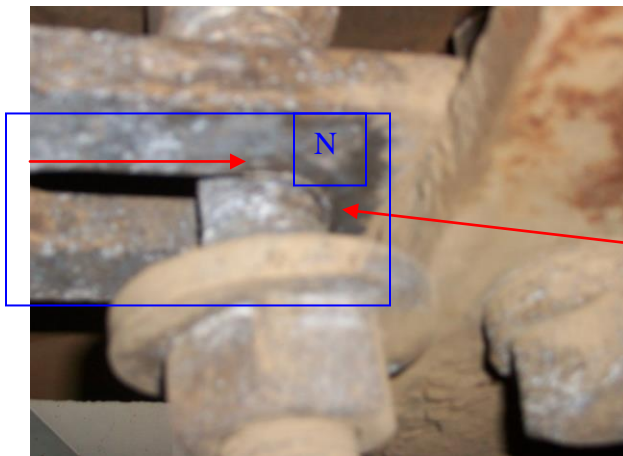
INSPECTION DEPARTMENT
-----------------------

North west main tower expansion joint . rocker plate location bolts.
--

DATE. 10/05/11
----------------



Rocker plate movement location bolts at their furthest point northwards as indicated on pictures.



View from underside. This is probably down to vertical misalignment from topside on installation.

All rocker plate and sliding plate pins and springs remain intact and secure, all fixings associated remain intact and secure . All existing pins and bushes remain intact and secure condition remains as prior to installation of expansion joint failsafe system. All system trains remain free to move.



INSPECTION DEPARTMENT
North west main tower expansion joint . rocker plate location bolts.
DATE. 10/05/11