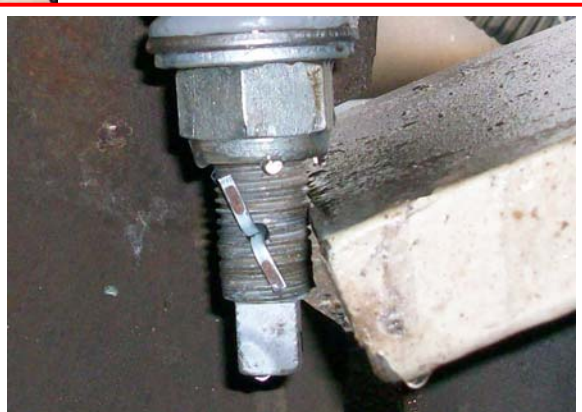
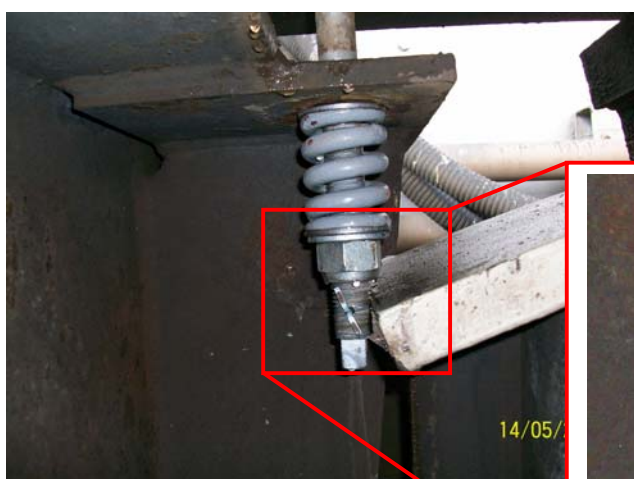




ON INSTALLATION OF THE SIDE SPAN TONGUE SPRING IT WAS DISCOVERED THAT THE FIXINGS CANNOT BE INSTALLED AS PER DRAWING, DUE TO A CLASH WITH THE RADIUS GIRDERS. THIS IS ILLUSTRATED IN THE PHOTOS.

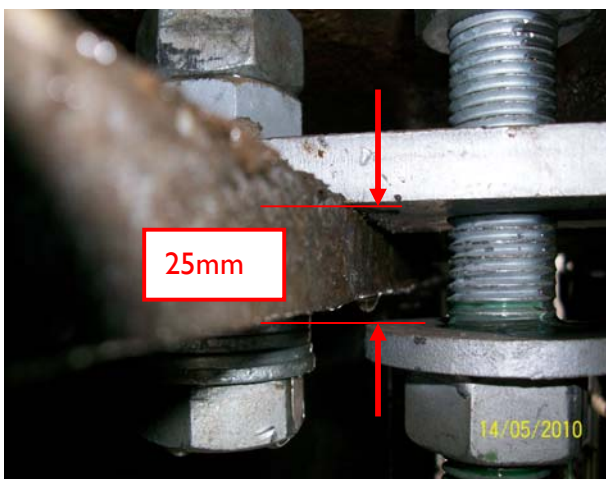
IF SECOND NUT IS TO BE INSTALLED TO DRAWING MODIFICATION TO RADIUS GIRDER WILL BE REQUIRED.





THE SIDE SPAN ROCKER LINK
PLATE TO SUPPORT BEAM IS NOT
FITTED TO DRAWING.
LINK PLATES HAVE BEEN REEMED
OUT TO ALLOW FOR ALIGNMENT
WITH ROCKER PLATE HOLE.
ALSO THE SPECIFIED 15mm
CLEARANCE BETWEEN LINK PLATE
AND WASHER IS NOW 25mm DUE
TO CLASH WITH BEAM FLANGE.

SEE BOTTOM PHOTOGRAPH.



Bridge Inspectors: