

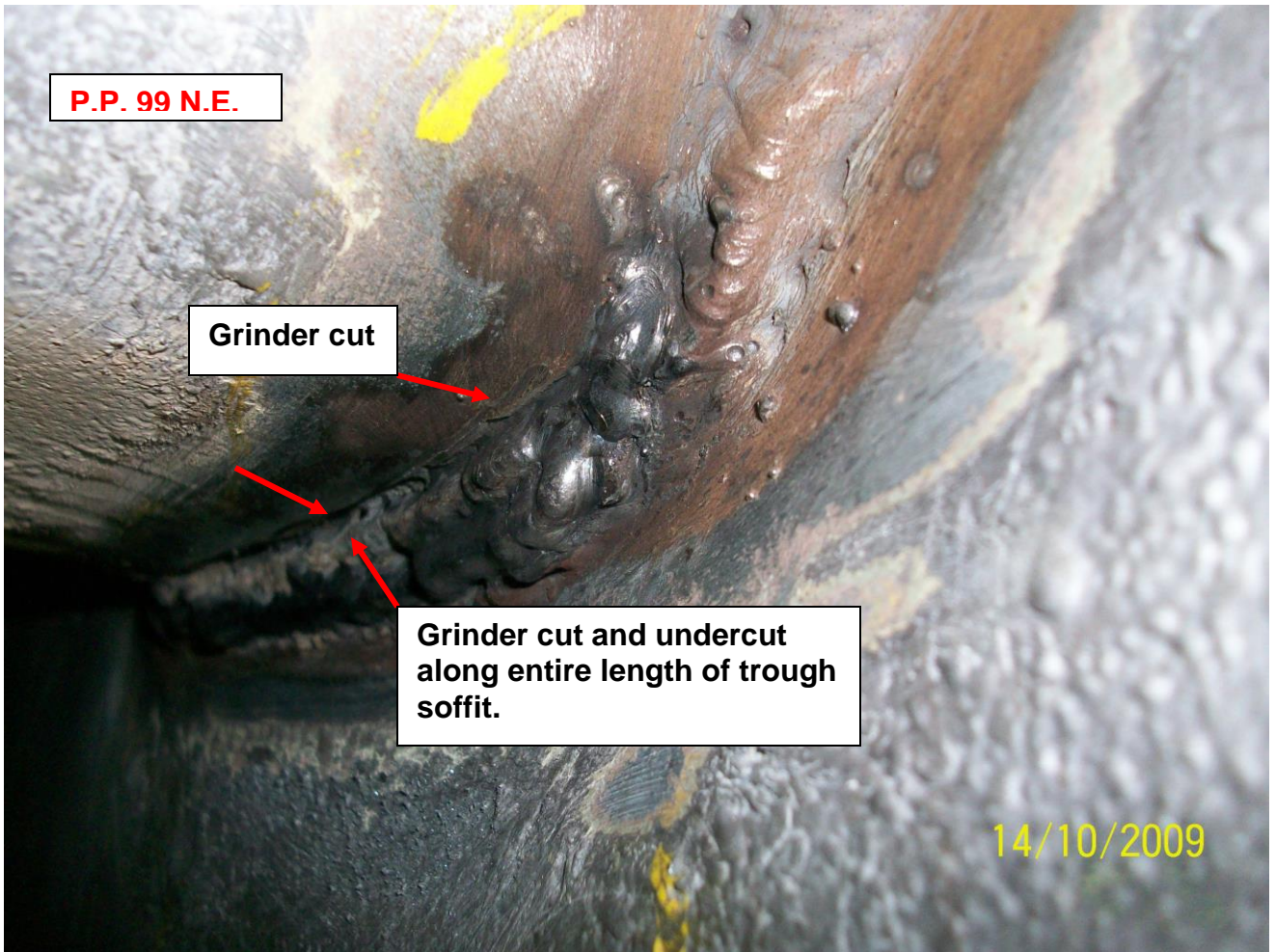
P.P. 99 N.E.

**Trough soffit ground out, not filled with weld. Some of the depth maybe due to undercut.
Depth = 2.5 – 3mm**

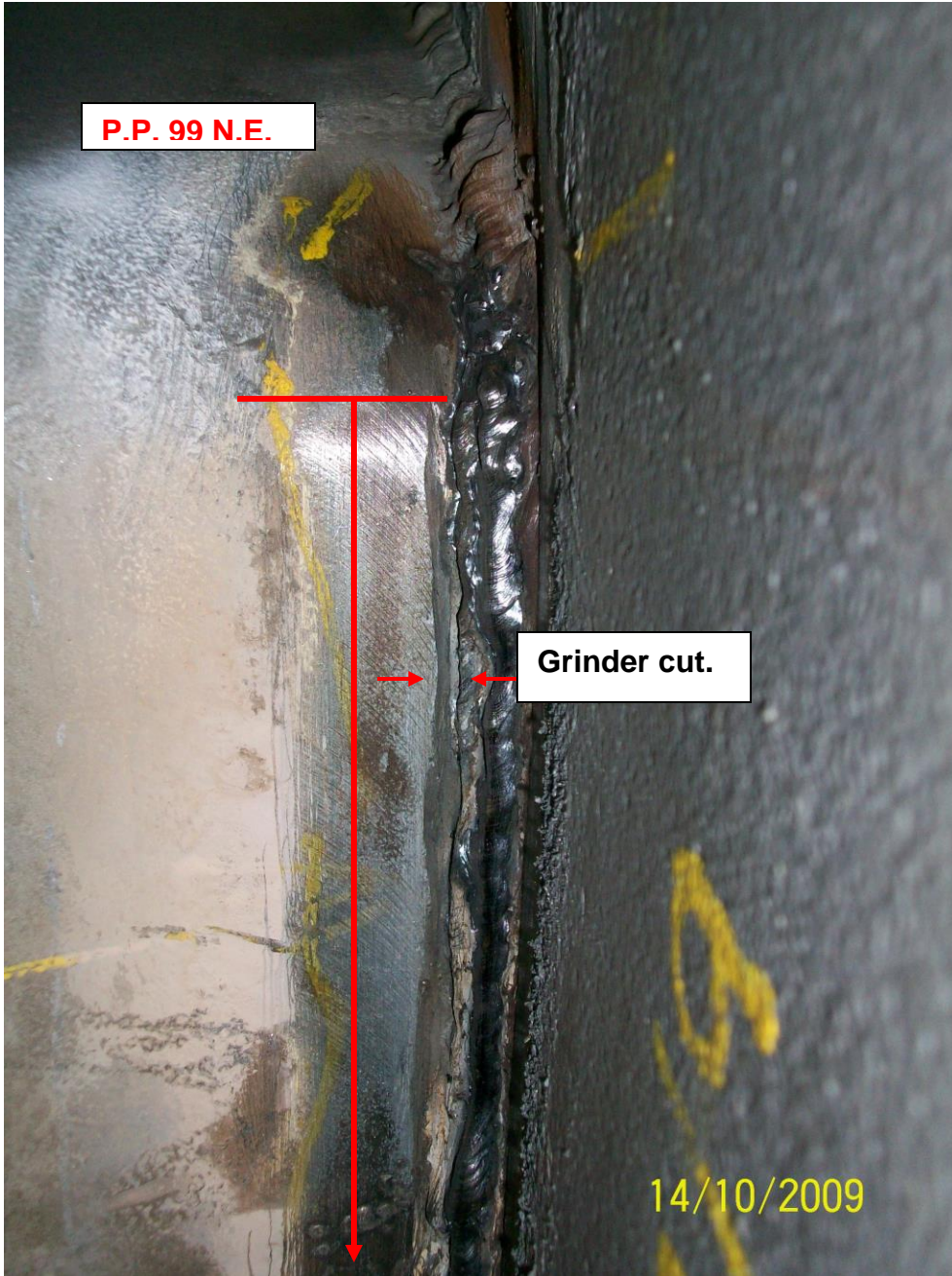
14/10/2009



G:\dd\t&p\rnmmd\branch8\FRB FOI\2. Inspection Records - Main Cable, Cable Anchorages\FETA inspection records for Suspended Span - FOI - Sheena\Mainspan\Independent Inspections\Visual Insp Trough p.p.99 N.E\PP99 N.E.Trough Weld FE01 2nd Attempt.doc



G:\dd\t&p\rnmmd\branch8\FRB FOI\2. Inspection Records - Main Cable, Cable Anchorages\FETA inspection records for Suspended Span - FOI - Sheena\Mainspan\Independent Inspections\Visual Insp Trough p.p.99 N.E\PP99 N.E.Trough Weld FE01 2nd Attempt.doc



G:\dd\t&p\rnmmd\branch8\FRB FOI\2. Inspection Records - Main Cable, Cable Anchorages\FETA inspection records for Suspended Span - FOI - Sheena\Mainspan\Independent Inspections\Visual Insp Trough p.p.99 N.E\PP99 N.E.Trough Weld FE01 2nd Attempt.doc



G:\dd\t&p\rnmmd\branch8\FRB FOI\2. Inspection Records - Main Cable, Cable Anchorages\FETA inspection records for Suspended Span - FOI - Sheena\Mainspan\Independent Inspections\Visual Insp Trough p.p.99 N.E\PP99 N.E.Trough Weld FE01 2nd Attempt.doc