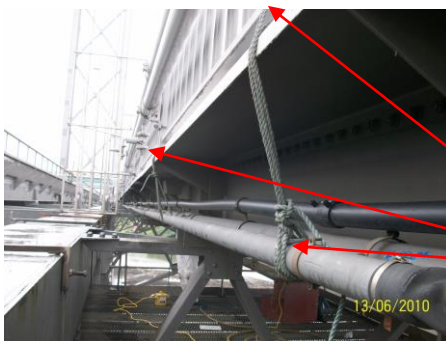
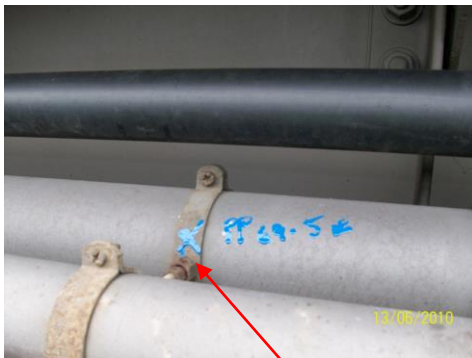


Photographs taken of defective service duct supports/stiffeners.  
Between PP68.5 & PP 71.5 ( east )



Section of service ducting being supported at 2 locations with rope over a distance of approx 6 mtrs. All holding / support brackets either missing or broken. Between PP69 & 71 east

There are approximately 8- 10 brackets that require to be replaced throughout this section.

INSPECTION DEPARTMENT
Mainspan upper front Pl. ( East side ) inner balustrade service ducts
DATE. 13/06/10