



INSPECTION DEPARTMENT
Main cable inspection defective nut locations.
DATE. 01/03/12.

Following a main cable inspection of the suspended structure, which was carried out from 28th February to March 1st 2012, a total of 16 defective bolt nuts with cracks at 15 bolt locations were recorded. This is the first main cable inspection to be carried out since 9th & 10th December 2009.

Picture library shows defective nut locations and current condition.

Defective bolt locations.

Side span North West.



PP. 38. Bolt "F" live side nut crack recorded. bottom face of nut.



PP. 26. Bolt "A" live side nut crack recorded, side face of nut.

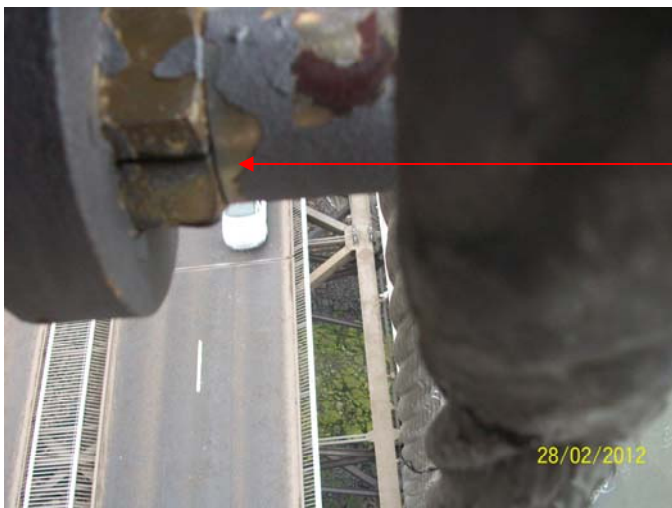


INSPECTION DEPARTMENT
Main cable inspection defective nut locations.
DATE. 01/03/12.

Defective bolt locations.
Side span North West.



PP. 24. Bolt "D" Dead side nut, crack recorded. On top & bottom faces of nut.



PP. 20. Bolt "D" live side nut crack recorded, side face of nut.

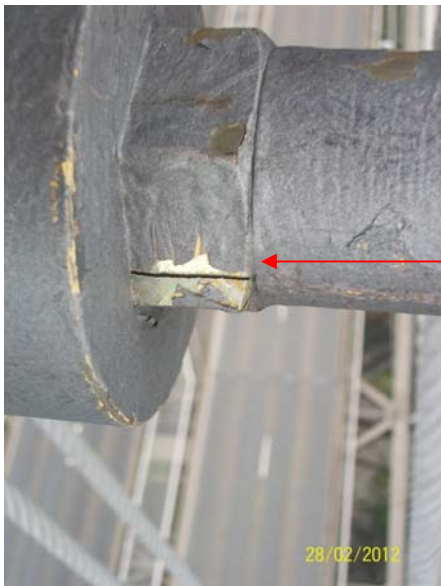


INSPECTION DEPARTMENT
Main cable inspection defective nut locations.
DATE. 01/03/12.

Defective bolt locations.
Side span North East.



PP. 36. Bolt "H" live side nut crack recorded,
bottom face of nut.



PP. 28. Bolt "F" live side nut crack recorded,
side face of nut.

Defective bolt locations.

G:\Inspection Records\FETA inspection records for Cable Bands -
Graeme\Reports\Suspended Structure Defective Nuts..doc



INSPECTION DEPARTMENT
Main cable inspection defective nut locations.
DATE. 01/03/12.

Side span North East.



PP. 22. Bolt "F" dead side, nut crack recorded, bottom face of nut.

Defective bolt locations.
Main span North West.

G:\Inspection Records\FETA inspection records for Cable Bands - Graeme\Reports\Suspended Structure Defective Nuts..doc



INSPECTION DEPARTMENT
Main cable inspection defective nut locations.
DATE. 01/03/12.



PP. 78. Bolt "D" dead side, nut crack recorded, bottom face of nut.

Defective bolt locations.
Main span North East.

G:\Inspection Records\FETA inspection records for Cable Bands -
Graeme\Reports\Suspended Structure Defective Nuts..doc



INSPECTION DEPARTMENT
Main cable inspection defective nut locations.
DATE. 01/03/12.



PP. 54. Bolt "D" live side, nut crack recorded, bottom face of nut.



PP. 54. Bolt "B" dead side, nut crack recorded, bottom face of nut.

Defective bolt locations.
Main span South East.



INSPECTION DEPARTMENT
Main cable inspection defective nut locations.
DATE. 01/03/12.



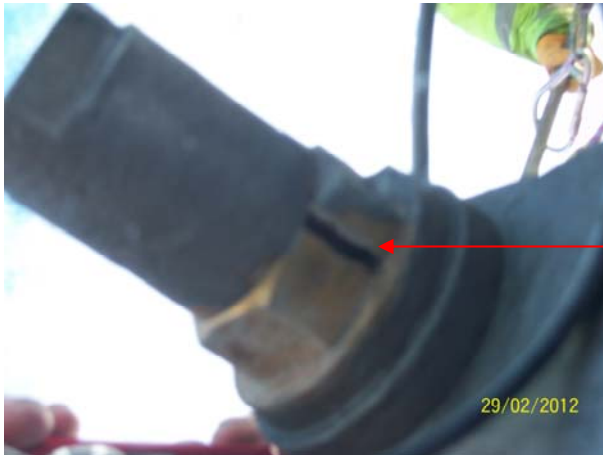
PP. 78. Bolt "B" live side, two nut cracks recorded, bottom face & south face of nut.



Defective bolt locations.
Main span South West.



INSPECTION DEPARTMENT
Main cable inspection defective nut locations.
DATE. 01/03/12.



PP. 52. Bolt "A" dead side, nut crack recorded, bottom face & south face of nut.
N.B. This is the widest crack recorded on all defective nuts found, this measures 4- 5 mm (fixed steel rule used) to measure.



PP. 80. Bolt "B" dead side, nut crack recorded, bottom face & side face of nut.

Defective bolt locations.
Side span South West.



INSPECTION DEPARTMENT
Main cable inspection defective nut locations.
DATE. 01/03/12.



Top



Bottom



PP. 24. Bolt "B" dead side, nut cracks recorded, Top, bottom & side faces of nut. (3 cracks recorded)

Defective bolt locations.
Side span South West.



INSPECTION DEPARTMENT
Main cable inspection defective nut locations.
DATE. 01/03/12.



Top



Bottom

PP. 24. Bolt "B" Live side, nut cracks recorded, Top, bottom & side faces of nut. (3 cracks recorded)



Side



INSPECTION DEPARTMENT
Main cable inspection defective nut locations.
DATE. 01/03/12.



PP. 24. Bolt "D" Live side, nut crack recorded, bottom face.

This concludes picture library information.

Bridge inspector