

**P.P.46 S.W.**

AUDCO VALVE PASSING  
AT VALVE STEM



**P.P.52 S.W.**

BASE WELD CRACKED AT  
POST SOUTH OF P.P.



**P.P.72 S.W.**

V.M.S. PROTECTION  
BARRIER IS HOLED IN  
TWO LOCATIONS



**P.P.91 N.W.**

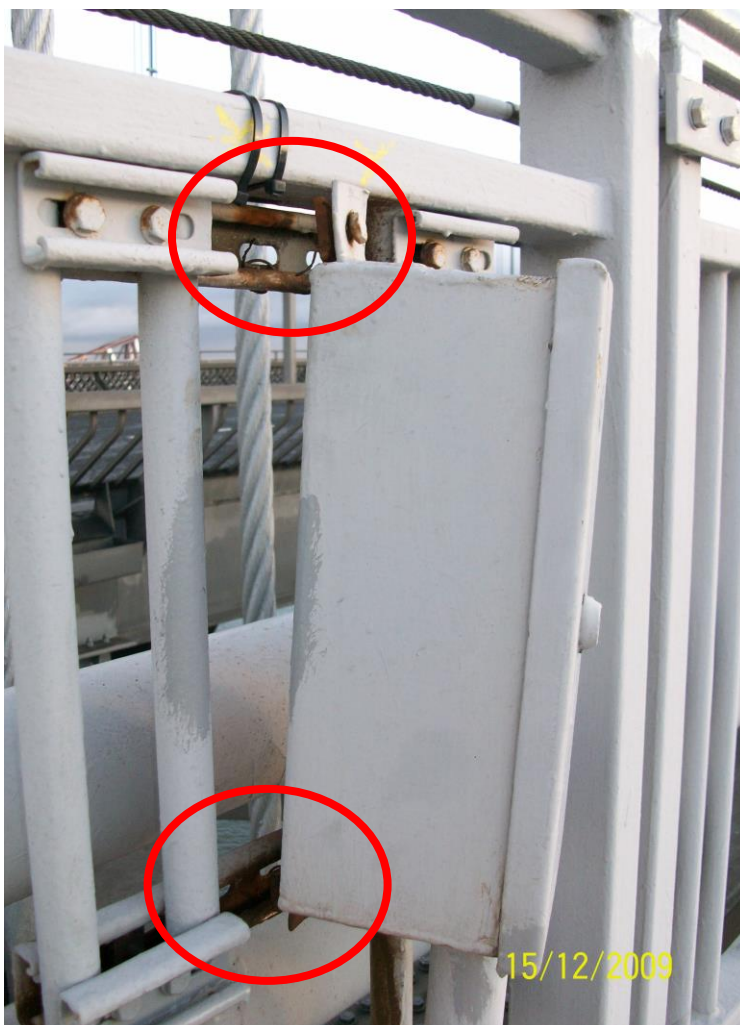
2" AIR LINE TAKE OFF NIPPLE,  
IS HEAVILY CORRODED.

**RECOMMEND  
REPLACEMENT BEFORE  
PRESSURE LEAK**



**P.P.90 N.W.**

1" WATER VALVE HAS A  
LOOSE ANTI-TAMPER SLEEVE



**P.P.74 N.W.**

ELEC. BOX 46 – PREVIOUSLY  
REPORTED LOOSE, NOW HAS  
BOTH FIXINGS BROKEN.





**P.P.85 N.W.**

2" AIR TAKE OFF : NIPPLE BETWEEN 90° ELBOWS HAS CORROSION AFFECTING WALL THICKNESS. REQUIRES REPLACING.